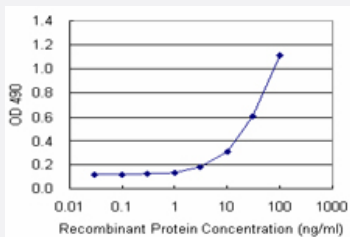


# CDKN2D (Human) Matched Antibody Pair

Catalog # H00001032-AP21      Size 1 Set

## Applications



Sandwich ELISA detection sensitivity ranging from 3 ng/ml to 100 ng/ml.

## Specification

<b>Product Description</b>	This antibody pair set comes with a matched antibody pair to detect and quantify the protein level of human CDKN2D.
<b>Reactivity</b>	Human
<b>Quality Control Testing</b>	Standard curve using recombinant protein ( H00001032-P01 ) as an analyte. Sandwich ELISA detection sensitivity ranging from 3 ng/ml to 100 ng/ml.
<b>Supplied Product</b>	Antibody pair set content: 1. Capture antibody: rabbit MaxPab® affinity purified polyclonal anti-CDKN2D (100 ug) 2. Detection antibody: mouse polyclonal anti-CDKN2D (40 ul) *Reagents are sufficient for at least 3-5 x 96 well plates using recommended protocols.
<b>Storage Instruction</b>	Store reagents of the antibody pair set at -20°C or lower. Please aliquot to avoid repeated freeze thaw cycle. Reagents should be returned to -20°C storage immediately after use.

## Applications

- ELISA Pair (Recombinant protein)

[Protocol Download](#)

## Gene Info — CDKN2D

Entrez GeneID [1032](#)

Gene Name CDKN2D

Gene Alias INK4D, p19, p19-INK4D

Gene Description cyclin-dependent kinase inhibitor 2D (p19, inhibits CDK4)

Omim ID [600927](#)

Gene Ontology [Hyperlink](#)

**Gene Summary**

The protein encoded by this gene is a member of the INK4 family of cyclin-dependent kinase inhibitors. This protein has been shown to form a stable complex with CDK4 or CDK6, and prevent the activation of the CDK kinases, thus function as a cell growth regulator that controls cell cycle G1 progression. The abundance of the transcript of this gene was found to oscillate in a cell-cycle dependent manner with the lowest expression at mid G1 and a maximal expression during S phase. The negative regulation of the cell cycle involved in this protein was shown to participate in repressing neuronal proliferation, as well as spermatogenesis. Two alternatively spliced variants of this gene, which encode an identical protein, have been reported. [provided by RefSeq]

**Other Designations**

CDK inhibitor p19INK4d|cell cycle inhibitor, Nur77 associating protein|cyclin-dependent kinase 4 inhibitor D p19|cyclin-dependent kinase inhibitor 2D|inhibitor of cyclin-dependent kinase 4d

## Pathway

- [Cell cycle](#)

## Disease

- [Breast cancer](#)
- [Breast Neoplasms](#)
- [Genetic Predisposition to Disease](#)
- [Kidney Failure](#)
- [Multiple endocrine neoplasia](#)
- [Multiple Endocrine Neoplasia Type 1](#)
- [Neoplasm Invasiveness](#)

- [Ovarian cancer](#)
- [Ovarian Neoplasms](#)