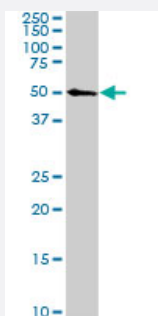


# CDK8 monoclonal antibody (M04), clone 2E6

Catalog # H00001024-M04

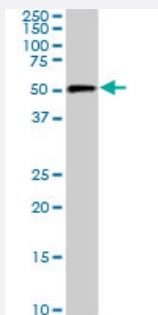
Size 100 ug

## Applications



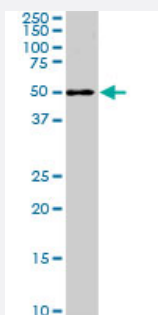
### Western Blot (Cell lysate)

CDK8 monoclonal antibody (M04), clone 2E6. Western Blot analysis of CDK8 expression in Raw 264.7 ( Cat # L024V1 ).



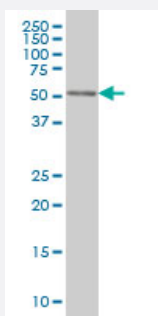
### Western Blot (Cell lysate)

CDK8 monoclonal antibody (M04), clone 2E6. Western Blot analysis of CDK8 expression in NIH/3T3 ( Cat # L018V1 ).



### Western Blot (Cell lysate)

CDK8 monoclonal antibody (M04), clone 2E6. Western Blot analysis of CDK8 expression in PC-12 ( Cat # L012V1 ).

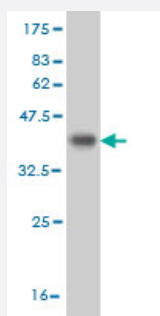
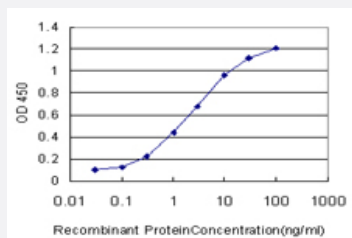


### Western Blot (Cell lysate)

CDK8 monoclonal antibody (M04), clone 2E6 Western Blot analysis of CDK8 expression in Hela S3 NE ( Cat # L013V3 ).

## Sandwich ELISA (Recombinant protein)

Detection limit for recombinant GST tagged CDK8 is approximately 0.1ng/ml as a capture antibody.



Western Blot detection against Immunogen (35.53 KDa) .

## Specification

<b>Product Description</b>	Mouse monoclonal antibody raised against a partial recombinant CDK8.
<b>Immunogen</b>	CDK8 (NP_001251, 375 a.a. ~ 464 a.a) partial recombinant protein with GST tag. MW of the GST tag alone is 26 KDa.
<b>Sequence</b>	QQQGNNHTNGTGHPGNQDSSHTQGPPKKVVRVVPPTTTSGGLIMTSDYQRSNPHAAYPNPGPST SQPQSSMGYSATSQQPPQYSHQTHRY
<b>Host</b>	Mouse
<b>Reactivity</b>	Human, Mouse, Rat
<b>Interspecies Antigen Sequence</b>	Mouse (98); Rat (98)
<b>Isotype</b>	IgG1 Kappa
<b>Quality Control Testing</b>	Antibody Reactive Against Recombinant Protein. Western Blot detection against Immunogen (35.53 KDa) .
<b>Storage Buffer</b>	In 1x PBS, pH 7.4
<b>Storage Instruction</b>	Store at -20°C or lower. Aliquot to avoid repeated freezing and thawing.

## Applications

- Western Blot (Cell lysate)

CDK8 monoclonal antibody (M04), clone 2E6. Western Blot analysis of CDK8 expression in Raw 264.7 ( Cat # L024V1 ).

[Protocol Download](#)

- Western Blot (Cell lysate)

CDK8 monoclonal antibody (M04), clone 2E6. Western Blot analysis of CDK8 expression in NIH/3T3 ( Cat # L018V1 ).

[Protocol Download](#)

- Western Blot (Cell lysate)

CDK8 monoclonal antibody (M04), clone 2E6. Western Blot analysis of CDK8 expression in PC-12 ( Cat # L012V1 ).

[Protocol Download](#)

- Western Blot (Cell lysate)

CDK8 monoclonal antibody (M04), clone 2E6 Western Blot analysis of CDK8 expression in Hela S3 NE ( Cat # L013V3 ).

[Protocol Download](#)

- Western Blot (Recombinant protein)

[Protocol Download](#)

- Sandwich ELISA (Recombinant protein)

Detection limit for recombinant GST tagged CDK8 is approximately 0.1ng/ml as a capture antibody.

[Protocol Download](#)

- ELISA

## Gene Info — CDK8

Entrez GeneID	<a href="#">1024</a>
---------------	----------------------

GeneBank Accession#	<a href="#">NM_001260</a>
---------------------	---------------------------

Protein Accession#	<a href="#">NP_001251</a>
--------------------	---------------------------

Gene Name	CDK8
-----------	------

Gene Alias	K35, MGC126074, MGC126075
Gene Description	cyclin-dependent kinase 8
Omim ID	<a href="#">603184</a>
Gene Ontology	<a href="#">Hyperlink</a>
Gene Summary	<p>The protein encoded by this gene is a member of the cyclin-dependent protein kinase (CDK) family. CDK family members are highly similar to the gene products of <i>Saccharomyces cerevisiae</i> cdc28, and <i>Schizosaccharomyces pombe</i> cdc2, and are known to be important regulators of cell cycle progression. This kinase and its regulatory subunit cyclin C are components of the RNA polymerase II holoenzyme complex, which phosphorylates the carboxy-terminal domain (CTD) of the largest subunit of RNA polymerase II. This kinase has also been shown to regulate transcription by targeting the CDK7/cyclin H subunits of the general transcription initiation factor IIIH (TFIIH), thus providing a link between the 'Mediator-like' protein complexes and the basal transcription machinery. [provided by RefSeq]</p>
Other Designations	CDK8 protein kinase OTTHUMP00000018158 cell division protein kinase 8 protein kinase K35