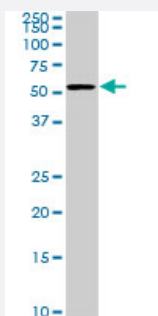


# CDK8 monoclonal antibody (M02), clone 6E5

Catalog # H00001024-M02

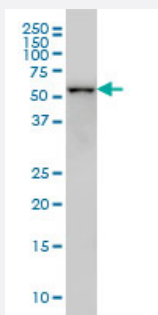
Size 100 ug

## Applications



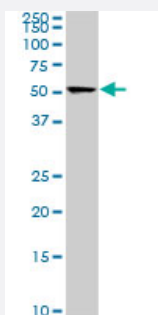
### Western Blot (Cell lysate)

CDK8 monoclonal antibody (M02), clone 6E5. Western Blot analysis of CDK8 expression in NIH/3T3 ( Cat # L018V1 ).



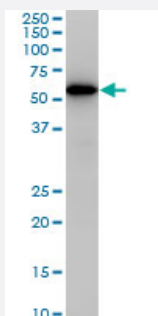
### Western Blot (Cell lysate)

CDK8 monoclonal antibody (M02), clone 6E5 Western Blot analysis of CDK8 expression in HeLa S3 NE ( Cat # L013V3 ).



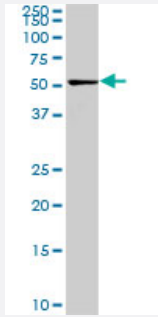
### Western Blot (Cell lysate)

CDK8 monoclonal antibody (M02), clone 6E5. Western Blot analysis of CDK8 expression in Raw 264.7 ( Cat # L024V1 ).



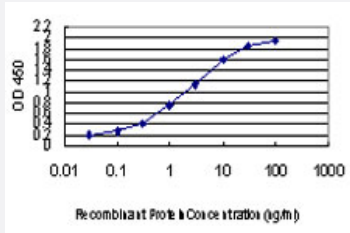
### Western Blot (Cell lysate)

CDK8 monoclonal antibody (M02), clone 6E5. Western Blot analysis of CDK8 expression in Jurkat ( Cat # L017V1 ).



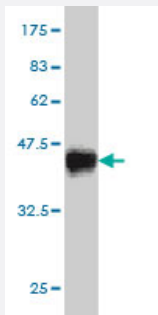
### Western Blot (Cell lysate)

CDK8 monoclonal antibody (M02), clone 6E5. Western Blot analysis of CDK8 expression in PC-12 ( Cat # L012V1 ).



### Sandwich ELISA (Recombinant protein)

Detection limit for recombinant GST tagged CDK8 is approximately 0.03ng/ml as a capture antibody.



Western Blot detection against Immunogen (35.53 KDa) .

## Specification

<b>Product Description</b>	Mouse monoclonal antibody raised against a partial recombinant CDK8.
<b>Immunogen</b>	CDK8 (NP_001251, 375 a.a. ~ 464 a.a) partial recombinant protein with GST tag. MW of the GST tag alone is 26 KDa.
<b>Sequence</b>	QQQGNNHTNGTGHPGNQDSSHTQGPPPLKKVRVVPPTTTSGGLIMTSDYQRSNPAAYPNPGPST SQPQSSMGYSATSQQPPQYSHQTHRY
<b>Host</b>	Mouse
<b>Reactivity</b>	Human, Mouse, Rat
<b>Interspecies Antigen Sequence</b>	Mouse (98); Rat (98)
<b>Isotype</b>	IgG1 Kappa

**Quality Control Testing**

Antibody Reactive Against Recombinant Protein.  
Western Blot detection against Immunogen (35.53 KDa) .

**Storage Buffer**

In 1x PBS, pH 7.4

**Storage Instruction**

Store at -20°C or lower. Aliquot to avoid repeated freezing and thawing.

## Applications

- Western Blot (Cell lysate)

CDK8 monoclonal antibody (M02), clone 6E5. Western Blot analysis of CDK8 expression in NIH/3T3 ( Cat # L018V1 ).

[Protocol Download](#)

- Western Blot (Cell lysate)

CDK8 monoclonal antibody (M02), clone 6E5 Western Blot analysis of CDK8 expression in Hela S3 NE ( Cat # L013V3 ).

[Protocol Download](#)

- Western Blot (Cell lysate)

CDK8 monoclonal antibody (M02), clone 6E5. Western Blot analysis of CDK8 expression in Raw 264.7 ( Cat # L024V1 ).

[Protocol Download](#)

- Western Blot (Cell lysate)

CDK8 monoclonal antibody (M02), clone 6E5. Western Blot analysis of CDK8 expression in Jurkat ( Cat # L017V1 ).

[Protocol Download](#)

- Western Blot (Cell lysate)

CDK8 monoclonal antibody (M02), clone 6E5. Western Blot analysis of CDK8 expression in PC-12 ( Cat # L012V1 ).

[Protocol Download](#)

- Western Blot (Recombinant protein)

[Protocol Download](#)

- Sandwich ELISA (Recombinant protein)

Detection limit for recombinant GST tagged CDK8 is approximately 0.03ng/ml as a capture antibody.

[Protocol Download](#)

- ELISA

## Gene Info — CDK8

Entrez GeneID [1024](#)

GeneBank Accession# [NM\\_001260](#)

Protein Accession# [NP\\_001251](#)

Gene Name CDK8

Gene Alias K35, MGC126074, MGC126075

Gene Description cyclin-dependent kinase 8

Omim ID [603184](#)

Gene Ontology [Hyperlink](#)

**Gene Summary**

The protein encoded by this gene is a member of the cyclin-dependent protein kinase (CDK) family. CDK family members are highly similar to the gene products of *Saccharomyces cerevisiae* cdc28, and *Schizosaccharomyces pombe* cdc2, and are known to be important regulators of cell cycle progression. This kinase and its regulatory subunit cyclin C are components of the RNA polymerase II holoenzyme complex, which phosphorylates the carboxy-terminal domain (CTD) of the largest subunit of RNA polymerase II. This kinase has also been shown to regulate transcription by targeting the CDK7/cyclin H subunits of the general transcription initiation factor IIH (TFIIH), thus providing a link between the 'Mediator-like' protein complexes and the basal transcription machinery. [provided by RefSeq]

**Other Designations** CDK8 protein kinase|OTTHUMP00000018158|cell division protein kinase 8|protein kinase K35