

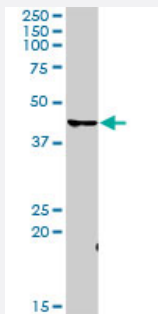
MaxPab®

## CDK7 purified MaxPab rabbit polyclonal antibody (D01P)

Catalog # H00001022-D01P

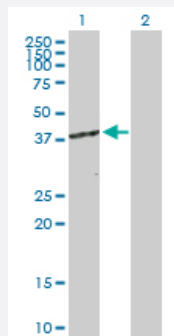
Size 100 ug

### Applications



#### Western Blot (Tissue lysate)

CDK7 MaxPab rabbit polyclonal antibody. Western Blot analysis of CDK7 expression in human pancreas.

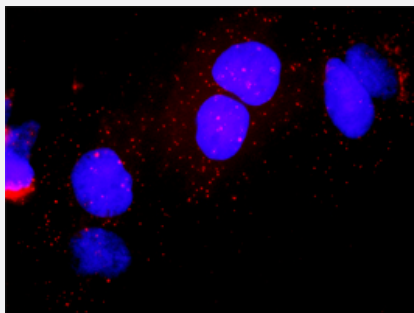


#### Western Blot (Transfected lysate)

Western Blot analysis of CDK7 expression in transfected 293T cell line ([H00001022-T01](#)) by CDK7 MaxPab polyclonal antibody.

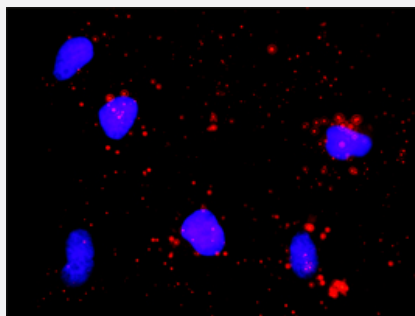
Lane 1: CDK7 transfected lysate(39.00 KDa).

Lane 2: Non-transfected lysate.



#### In situ Proximity Ligation Assay (Cell)

Proximity Ligation Analysis of protein-protein interactions between CDK7 and E2F1. Huh7 cells were stained with anti-CDK7 rabbit purified polyclonal 1:1200 and anti-E2F1 mouse monoclonal antibody 1:50. Each red dot represents the detection of protein-protein interaction complex, and nuclei were counterstained with DAPI (blue).



### In situ Proximity Ligation Assay (Cell)

Proximity Ligation Analysis of protein-protein interactions between CDK7 and E2F1. HeLa cells were stained with anti-CDK7 rabbit purified polyclonal 1:1200 and anti-E2F1 mouse monoclonal antibody 1:50. Each red dot represents the detection of protein-protein interaction complex, and nuclei were counterstained with DAPI (blue).

## Specification

Product Description	Rabbit polyclonal antibody raised against a full-length human CDK7 protein.
Immunogen	CDK7 (NP_001790.1, 1 a.a. ~ 346 a.a) full-length human protein.
Sequence	MALDVKSRAKRYEKLDLFLGEGQFATVYKARDKNTNQVAIKKIKLGHRSEAKDGINRTALREIKLLQ ELSHPNIIIGLLDAFGHKSNISLVDFMETDLEVIKDNSLVLTPSHIKAYMLMTLQGLEYLHQHWILHR DLKPNLLLLDENGVLKLADFGLSFGSPNRAYTHQVVTRWYRAPELLFGARMYGVGVDMWAV GCILAEALLLRVPFLPGDSDLDQLTRIFETLGTPTTEQWPDMSLPDYVTFKSFGIPLHHIFSAAGD DLLDLIQGLFLFNPCARITATQALKMKYFSNRPGPTPGCQLPRPNCPVETLKEQSNPALAIKRKRT EALQQGGLPKKLIF
Host	Rabbit
Reactivity	Human
Quality Control Testing	Antibody reactive against mammalian transfected lysate.
Storage Buffer	In 1x PBS, pH 7.4
Storage Instruction	Store at -20°C or lower. Aliquot to avoid repeated freezing and thawing.

## Applications

### ● Western Blot (Tissue lysate)

CDK7 MaxPab rabbit polyclonal antibody. Western Blot analysis of CDK7 expression in human pancreas.

[Protocol Download](#)

- Western Blot (Transfected lysate)

Western Blot analysis of CDK7 expression in transfected 293T cell line ([H00001022-T01](#)) by CDK7 MaxPab polyclonal antibody.

Lane 1: CDK7 transfected lysate(39.00 KDa).

Lane 2: Non-transfected lysate.

[Protocol Download](#)

- In situ* Proximity Ligation Assay (Cell)

Proximity Ligation Analysis of protein-protein interactions between CDK7 and E2F1. Huh7 cells were stained with anti-CDK7 rabbit purified polyclonal 1:1200 and anti-E2F1 mouse monoclonal antibody 1:50. Each red dot represents the detection of protein-protein interaction complex, and nuclei were counterstained with DAPI (blue).

- In situ* Proximity Ligation Assay (Cell)

Proximity Ligation Analysis of protein-protein interactions between CDK7 and E2F1. HeLa cells were stained with anti-CDK7 rabbit purified polyclonal 1:1200 and anti-E2F1 mouse monoclonal antibody 1:50. Each red dot represents the detection of protein-protein interaction complex, and nuclei were counterstained with DAPI (blue).

## Gene Info — CDK7

Entrez GeneID [1022](#)

GeneBank Accession# [NM\\_001799.2](#)

Protein Accession# [NP\\_001790.1](#)

Gene Name CDK7

Gene Alias CAK1, CDKN7, MO15, STK1, p39MO15

Gene Description cyclin-dependent kinase 7

Omim ID [601955](#)

Gene Ontology [Hyperlink](#)

**Gene Summary** The protein encoded by this gene is a member of the cyclin-dependent protein kinase (CDK) family. CDK family members are highly similar to the gene products of *Saccharomyces cerevisiae* cdc28, and *Schizosaccharomyces pombe* cdc2, and are known to be important regulators of cell cycle progression. This protein forms a trimeric complex with cyclin H and MAT1, which functions as a Cdk-activating kinase (CAK). It is an essential component of the transcription factor TFIIH, that is involved in transcription initiation and DNA repair. This protein is thought to serve as a direct link between the regulation of transcription and the cell cycle. [provided by RefSeq]

**Other Designations**

39 KDa protein kinase|Cdk-activating kinase|cell division protein kinase 7|cyclin-dependent kinase 7 (MO15 homolog, Xenopus laevis, cdk-activating kinase)|homolog of Xenopus MO15 Cdk-activating kinase|kinase subunit of CAK|serine/threonine kinase stk1|ser

**Pathway**

- [Cell cycle](#)
- [Nucleotide excision repair](#)

**Disease**

- [Adenocarcinoma](#)
- [Ataxia telangiectasia](#)
- [Colonic Neoplasms](#)
- [Colorectal Neoplasms](#)
- [Esophageal Neoplasms](#)
- [Genetic Predisposition to Disease](#)
- [Kidney Failure](#)
- [Lung Neoplasms](#)
- [Multiple Sclerosis](#)
- [Ovarian Neoplasms](#)
- [Pulmonary Disease](#)
- [Rectal Neoplasms](#)
- [Urinary Bladder Neoplasms](#)
- [Werner syndrome](#)