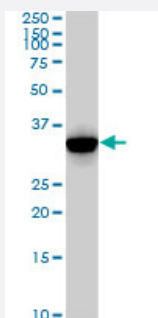


CDK2 monoclonal antibody (M02), clone 2E8

Catalog # H00001017-M02

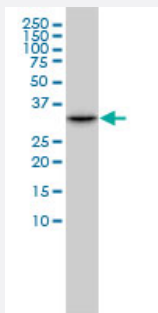
Size 100 ug

Applications



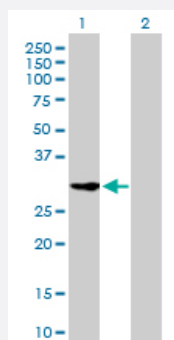
Western Blot (Cell lysate)

CDK2 monoclonal antibody (M02), clone 2E8. Western Blot analysis of CDK2 expression in Jurkat (Cat # L017V1).



Western Blot (Cell lysate)

CDK2 monoclonal antibody (M02), clone 2E8 Western Blot analysis of CDK2 expression in HL-60 (Cat # L014V1).

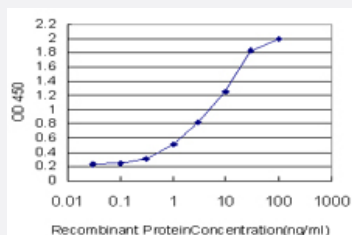


Western Blot (Transfected lysate)

Western Blot analysis of CDK2 expression in transfected 293T cell line by CDK2 monoclonal antibody (M02), clone 2E8.

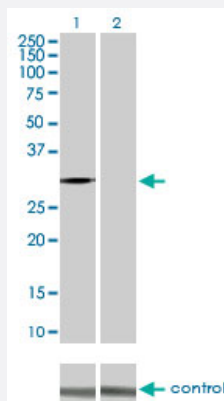
Lane 1: CDK2 transfected lysate(33.9 KDa).

Lane 2: Non-transfected lysate.



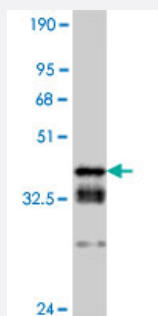
Sandwich ELISA (Recombinant protein)

Detection limit for recombinant GST tagged CDK2 is approximately 0.03ng/ml as a capture antibody.



RNAi Knockdown (Antibody validated)

Western blot analysis of CDK2 over-expressed 293 cell line, cotransfected with CDK2 Validated Chimera RNAi (Cat # H00001017-R01V) (Lane 2) or non-transfected control (Lane 1). Blot probed with CDK2 monoclonal antibody (M02) clone 2E8 (Cat # H00001017-M02). GAPDH (36.1 kDa) used as specificity and loading control.



Western Blot detection against Immunogen (35.42 KDa) .

Specification

Product Description	Mouse monoclonal antibody raised against a partial recombinant CDK2.
Immunogen	CDK2 (AAH03065, 211 a.a. ~ 298 a.a) partial recombinant protein with GST tag. MW of the GST tag alone is 26 KDa.
Sequence	QLFRIFRTLGTLPDEVVWPGVTSMPDYKPSFPKWARQDFSKVVPPLDEDGRSLLSQMLHYDPNKRISAKAALAHPPFFQDVTKPVPHRLR
Host	Mouse
Reactivity	Human
Isotype	IgG1 kappa
Quality Control Testing	Antibody Reactive Against Recombinant Protein. Western Blot detection against Immunogen (35.42 KDa) .
Storage Buffer	In 1x PBS, pH 7.4
Storage Instruction	Store at -20°C or lower. Aliquot to avoid repeated freezing and thawing.

Applications

- Western Blot (Cell lysate)

CDK2 monoclonal antibody (M02), clone 2E8. Western Blot analysis of CDK2 expression in Jurkat (Cat # L017V1).

[Protocol Download](#)

- Western Blot (Cell lysate)

CDK2 monoclonal antibody (M02), clone 2E8 Western Blot analysis of CDK2 expression in HL-60 (Cat # L014V1).

[Protocol Download](#)

- Western Blot (Transfected lysate)

Western Blot analysis of CDK2 expression in transfected 293T cell line by CDK2 monoclonal antibody (M02), clone 2E8.

Lane 1: CDK2 transfected lysate(33.9 KDa).

Lane 2: Non-transfected lysate.

[Protocol Download](#)

- Western Blot (Recombinant protein)

[Protocol Download](#)

- Sandwich ELISA (Recombinant protein)

Detection limit for recombinant GST tagged CDK2 is approximately 0.03ng/ml as a capture antibody.

[Protocol Download](#)

- ELISA

- RNAi Knockdown (Antibody validated)

Western blot analysis of CDK2 over-expressed 293 cell line, cotransfected with CDK2 Validated Chimera RNAi (Cat # H00001017-R01V) (Lane 2) or non-transfected control (Lane 1). Blot probed with CDK2 monoclonal antibody (M02) clone 2E8 (Cat # H00001017-M02). GAPDH (36.1 kDa) used as specificity and loading control.

[Protocol Download](#)

Gene Info — CDK2

Entrez GeneID

[1017](#)

GeneBank Accession#	BC003065
Protein Accession#	AAH03065
Gene Name	CDK2
Gene Alias	p33(CDK2)
Gene Description	cyclin-dependent kinase 2
Omim ID	116953
Gene Ontology	Hyperlink
Gene Summary	<p>The protein encoded by this gene is a member of the Ser/Thr protein kinase family. This protein kinase is highly similar to the gene products of <i>S. cerevisiae</i> cdc28, and <i>S. pombe</i> cdc2. It is a catalytic subunit of the cyclin-dependent protein kinase complex, whose activity is restricted to the G1-S phase, and essential for cell cycle G1/S phase transition. This protein associates with and regulated by the regulatory subunits of the complex including cyclin A or E, CDK inhibitor p21Cip1 (CDKN1A) and p27Kip1 (CDKN1B). Its activity is also regulated by its protein phosphorylation. Two alternatively spliced variants and multiple transcription initiation sites of this gene have been reported. [provided by RefSeq]</p>
Other Designations	cdc2-related protein kinase cell division kinase 2 p33 protein kinase

Pathway

- [Cell cycle](#)
- [p53 signaling pathway](#)
- [Pathways in cancer](#)
- [Prostate cancer](#)
- [Small cell lung cancer](#)

Disease

- [Azoospermia](#)
- [Breast cancer](#)
- [Breast Neoplasms](#)
- [Chromosome Aberrations](#)

- [Diabetes Mellitus](#)
- [Genetic Predisposition to Disease](#)
- [Kidney Failure](#)
- [Lymphoma](#)
- [Neoplasm Invasiveness](#)
- [Ovarian cancer](#)
- [Ovarian Neoplasms](#)