

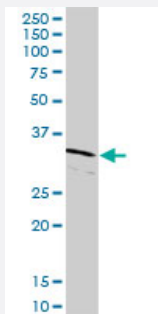
MaxPab®

CDK2 purified MaxPab rabbit polyclonal antibody (D01P)

Catalog # H00001017-D01P

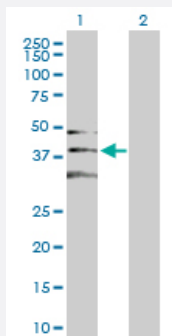
Size 100 ug

Applications



Western Blot (Tissue lysate)

CDK2 MaxPab rabbit polyclonal antibody. Western Blot analysis of CDK2 expression in human kidney.

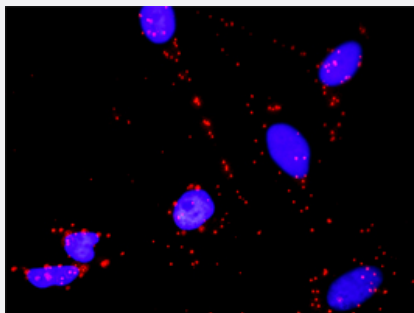


Western Blot (Transfected lysate)

Western Blot analysis of CDK2 expression in transfected 293T cell line ([H00001017-T03](#)) by CDK2 MaxPab polyclonal antibody.

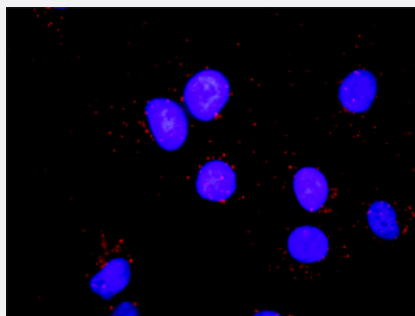
Lane 1: CDK2 transfected lysate(33.90 KDa).

Lane 2: Non-transfected lysate.



In situ Proximity Ligation Assay (Cell)

Proximity Ligation Analysis of protein-protein interactions between CDK2 and TP53. HeLa cells were stained with anti-CDK2 rabbit purified polyclonal 1:1200 and anti-TP53 mouse monoclonal antibody 1:50. Each red dot represents the detection of protein-protein interaction complex, and nuclei were counterstained with DAPI (blue).



In situ Proximity Ligation Assay (Cell)

Proximity Ligation Analysis of protein-protein interactions between CDK2 and PCNA. Mahlavu cells were stained with anti-CDK2 rabbit purified polyclonal 1:1200 and anti-PCNA mouse monoclonal antibody 1:50. Each red dot represents the detection of protein-protein interaction complex, and nuclei were counterstained with DAPI (blue).

Specification

Product Description	Rabbit polyclonal antibody raised against a full-length human CDK2 protein.
Immunogen	CDK2 (NP_001789.2, 1 a.a. ~ 298 a.a) full-length human protein.
Sequence	MENFQKVEKIGEGTYGVVYKARNKLTGEVVALKKIRLDTETEGVPSTAIREISLLKELNHPNVKLLD VIHTENKLYLVFEFLHQDLKKFMDASALTGIPLPLIKSYLFQLLQGLAFCHSHRVLHRDLKPQNLLIN TEGAIKLADFGLARAFGVPVRTYTHEVVTLWYRAPEILLGCKYYSTAVDIWSLGCIFAEMVTRRALF PGDSEIDQLFRIFRTLGTPDEVVWPGVTSMPPDYKPSFPPKWARQDFSKVVPPLDEDGRSLLSQML HYDPNKRISAKAALAHPPFQDVTKPVPHRLR
Host	Rabbit
Reactivity	Human
Quality Control Testing	Antibody reactive against mammalian transfected lysate.
Storage Buffer	In 1x PBS, pH 7.4
Storage Instruction	Store at -20°C or lower. Aliquot to avoid repeated freezing and thawing.

Applications

Western Blot (Tissue lysate)

CDK2 MaxPab rabbit polyclonal antibody. Western Blot analysis of CDK2 expression in human kidney.

[Protocol Download](#)

- Western Blot (Transfected lysate)

Western Blot analysis of CDK2 expression in transfected 293T cell line ([H00001017-T03](#)) by CDK2 MaxPab polyclonal antibody.

Lane 1: CDK2 transfected lysate(33.90 KDa).

Lane 2: Non-transfected lysate.

[Protocol Download](#)

- In situ* Proximity Ligation Assay (Cell)

Proximity Ligation Analysis of protein-protein interactions between CDK2 and TP53. HeLa cells were stained with anti-CDK2 rabbit purified polyclonal 1:1200 and anti-TP53 mouse monoclonal antibody 1:50. Each red dot represents the detection of protein-protein interaction complex, and nuclei were counterstained with DAPI (blue).

- In situ* Proximity Ligation Assay (Cell)

Proximity Ligation Analysis of protein-protein interactions between CDK2 and PCNA. Mahlavu cells were stained with anti-CDK2 rabbit purified polyclonal 1:1200 and anti-PCNA mouse monoclonal antibody 1:50. Each red dot represents the detection of protein-protein interaction complex, and nuclei were counterstained with DAPI (blue).

Gene Info — CDK2

Entrez GeneID [1017](#)

GeneBank Accession# [NM_001798.2](#)

Protein Accession# [NP_001789.2](#)

Gene Name CDK2

Gene Alias p33(CDK2)

Gene Description cyclin-dependent kinase 2

Omim ID [116953](#)

Gene Ontology [Hyperlink](#)

Gene Summary The protein encoded by this gene is a member of the Ser/Thr protein kinase family. This protein kinase is highly similar to the gene products of *S. cerevisiae* cdc28, and *S. pombe* cdc2. It is a catalytic subunit of the cyclin-dependent protein kinase complex, whose activity is restricted to the G1-S phase, and essential for cell cycle G1/S phase transition. This protein associates with and regulated by the regulatory subunits of the complex including cyclin A or E, CDK inhibitor p21Cip1 (CDKN1A) and p27Kip1 (CDKN1B). Its activity is also regulated by its protein phosphorylation. Two alternatively spliced variants and multiple transcription initiation sites of this gene have been reported. [provided by RefSeq]

Other Designations cdc2-related protein kinase|cell division kinase 2|p33 protein kinase

Pathway

- [Cell cycle](#)
- [p53 signaling pathway](#)
- [Pathways in cancer](#)
- [Prostate cancer](#)
- [Small cell lung cancer](#)

Disease

- [Azoospermia](#)
- [Breast cancer](#)
- [Breast Neoplasms](#)
- [Chromosome Aberrations](#)
- [Diabetes Mellitus](#)
- [Genetic Predisposition to Disease](#)
- [Kidney Failure](#)
- [Lymphoma](#)
- [Neoplasm Invasiveness](#)
- [Ovarian cancer](#)
- [Ovarian Neoplasms](#)