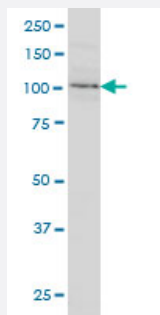


CDH18 monoclonal antibody (M01), clone 6F7

Catalog # H00001016-M01

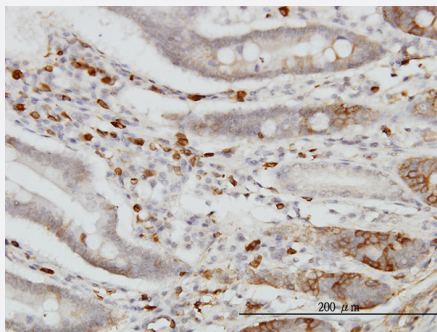
Size 100 ug

Applications



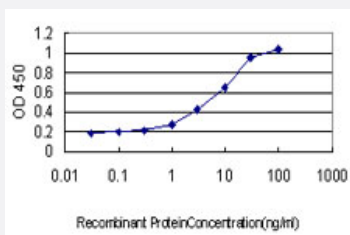
Western Blot (Cell lysate)

CDH18 monoclonal antibody (M01), clone 6F7 Western Blot analysis of CDH18 expression in HeLa (Cat # L013V1).



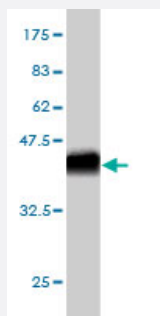
Immunohistochemistry (Formalin/PFA-fixed paraffin-embedded sections)

Immunoperoxidase of monoclonal antibody to CDH18 on formalin-fixed paraffin-embedded human small Intestine. [antibody concentration 3 ug/ml]



Sandwich ELISA (Recombinant protein)

Detection limit for recombinant GST tagged CDH18 is approximately 0.1 ng/ml as a capture antibody.



Western Blot detection against Immunogen (37.84 KDa) .

Specification

Product Description	Mouse monoclonal antibody raised against a partial recombinant CDH18.
Immunogen	CDH18 (NP_004925, 467 a.a. ~ 576 a.a) partial recombinant protein with GST tag. MW of the GST tag alone is 26 KDa.
Sequence	DLLSHVTVGIRVLDVNDNPPELAREYDIIVCENSKPGQVIHTISATDKDDFANGPRFNFFLDERLPV NPNFTLKDNDNTASILTRRRRFSRTVQDVYLPIMISDGGIP
Host	Mouse
Reactivity	Human
Interspecies Antigen Sequence	Mouse (95)
Isotype	IgG2a Kappa
Quality Control Testing	Antibody Reactive Against Recombinant Protein. Western Blot detection against Immunogen (37.84 KDa) .
Storage Buffer	In 1x PBS, pH 7.4
Storage Instruction	Store at -20°C or lower. Aliquot to avoid repeated freezing and thawing.

Applications

- Western Blot (Cell lysate)

CDH18 monoclonal antibody (M01), clone 6F7 Western Blot analysis of CDH18 expression in HeLa (Cat # L013V1).

[Protocol Download](#)

- Western Blot (Recombinant protein)

[Protocol Download](#)

- Immunohistochemistry (Formalin/PFA-fixed paraffin-embedded sections)

Immunoperoxidase of monoclonal antibody to CDH18 on formalin-fixed paraffin-embedded human small Intestine. [antibody concentration 3 ug/ml]

[Protocol Download](#)

- Sandwich ELISA (Recombinant protein)

Detection limit for recombinant GST tagged CDH18 is approximately 0.1ng/ml as a capture antibody.

[Protocol Download](#)

- ELISA

Gene Info — CDH18

Entrez GeneID [1016](#)

GeneBank Accession# [NM_004934](#)

Protein Accession# [NP_004925](#)

Gene Name CDH18

Gene Alias CDH14, CDH14L, CDH24, EY-CADHERIN

Gene Description cadherin 18, type 2

Omim ID [603019](#)

Gene Ontology [Hyperlink](#)

Gene Summary This gene encodes a type II classical cadherin from the cadherin superfamily of integral membrane proteins that mediate calcium-dependent cell-cell adhesion. Mature cadherin proteins are composed of a large N-terminal extracellular domain, a single membrane-spanning domain, and a small, highly conserved C-terminal cytoplasmic domain. Type II (atypical) cadherins are defined based on their lack of a HAV cell adhesion recognition sequence specific to type I cadherins. This particular cadherin is expressed specifically in the central nervous system and is putatively involved in synaptic adhesion, axon outgrowth and guidance. [provided by RefSeq]

Other Designations OTTHUMP00000115690|cadherin-14|cadherin-18|cadherin-like 24

Publication Reference

- [PDLIM7 and CDH18 regulate the turnover of MDM2 during CDK4/6 inhibitor therapy-induced senescence.](#)

Klein ME, Dickson MA, Antonescu C, Qin LX, Dooley SJ, Barlas A, Manova K, Schwartz GK, Crago AM, Singer S, Koff A, Tap WD.

Oncogene 2018 May; [Epub].

Application: IHC-P, WB-Ce, Human, LS8817, LS141, LS0082, H1975, LS8107, LS8313, H358 cells, Liposarcomas

Disease

- [Tobacco Use Disorder](#)