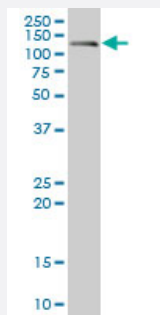


# CDH17 monoclonal antibody (M01), clone 1H3

Catalog # H00001015-M01

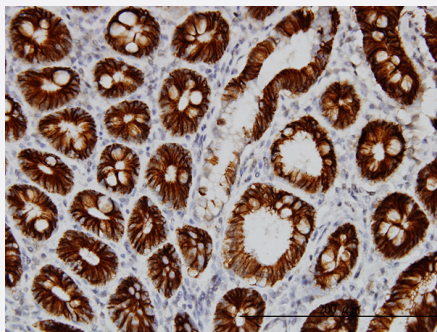
Size 100 ug

## Applications



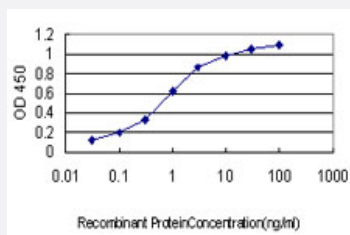
### Western Blot (Tissue lysate)

CDH17 monoclonal antibody (M01), clone 1H3. Western Blot analysis of CDH17 expression in human intestinal wall.



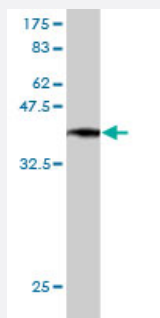
### Immunohistochemistry (Formalin/PFA-fixed paraffin-embedded sections)

Immunoperoxidase of monoclonal antibody to CDH17 on formalin-fixed paraffin-embedded human small Intestine. [antibody concentration 3 ug/ml]



### Sandwich ELISA (Recombinant protein)

Detection limit for recombinant GST tagged CDH17 is approximately 0.03ng/ml as a capture antibody.



Western Blot detection against Immunogen (37.62 KDa) .

## Specification

<b>Product Description</b>	Mouse monoclonal antibody raised against a partial recombinant CDH17.
<b>Immunogen</b>	CDH17 (NP_004054, 24 a.a. ~ 131 a.a) partial recombinant protein with GST tag. MW of the GST tag alone is 26 KDa.
<b>Sequence</b>	EGKFSGPLKPMTFSIYEGQEPSQIIFQFKANPPAVTFELTGETDNIFVIEREGLLYNRLDRETRST HNLQVAALDANGIIVEGPVPITIEVKDINDNRPTFLQSKY
<b>Host</b>	Mouse
<b>Reactivity</b>	Human
<b>Interspecies Antigen Sequence</b>	Mouse (84); Rat (83)
<b>Isotype</b>	IgG1 Kappa
<b>Quality Control Testing</b>	Antibody Reactive Against Recombinant Protein. Western Blot detection against Immunogen (37.62 KDa) .
<b>Storage Buffer</b>	In 1x PBS, pH 7.4
<b>Storage Instruction</b>	Store at -20°C or lower. Aliquot to avoid repeated freezing and thawing.

## Applications

- Western Blot (Tissue lysate)

CDH17 monoclonal antibody (M01), clone 1H3. Western Blot analysis of CDH17 expression in human intestinal wall.

[Protocol Download](#)

- Western Blot (Recombinant protein)

[Protocol Download](#)

- Immunohistochemistry (Formalin/PFA-fixed paraffin-embedded sections)

Immunoperoxidase of monoclonal antibody to CDH17 on formalin-fixed paraffin-embedded human small Intestine. [antibody concentration 3 ug/ml]

[Protocol Download](#)

- Sandwich ELISA (Recombinant protein)

Detection limit for recombinant GST tagged CDH17 is approximately 0.03ng/ml as a capture antibody.

[Protocol Download](#)

- ELISA

## Gene Info — CDH17

Entrez GeneID [1015](#)

GeneBank Accession# [NM\\_004063](#)

Protein Accession# [NP\\_004054](#)

Gene Name CDH17

Gene Alias CDH16, FLJ26931, HPT-1, HPT1, MGC138218, MGC142024

Gene Description cadherin 17, LI cadherin (liver-intestine)

Omim ID [603017](#)

Gene Ontology [Hyperlink](#)

**Gene Summary** This gene is a member of the cadherin superfamily, genes encoding calcium-dependent, membrane-associated glycoproteins. The encoded protein is cadherin-like, consisting of an extracellular region, containing 7 cadherin domains, and a transmembrane region but lacking the conserved cytoplasmic domain. The protein is a component of the gastrointestinal tract and pancreatic ducts, acting as an intestinal proton-dependent peptide transporter in the first step in oral absorption of many medically important peptide-based drugs. The protein may also play a role in the morphological organization of liver and intestine. Alternative splicing results in multiple transcript variants. [provided by RefSeq]

**Other Designations** HPT-1 cadherin|LI cadherin|cadherin 17|cadherin-16|human intestinal peptide-associated transporter HPT-1|human peptide transporter 1|liver-intestine cadherin

## Publication Reference

- [Comparison of cadherin-17 expression between primary colorectal adenocarcinomas and their corresponding metastases: the possibility of a diagnostic marker for detecting the primary site of metastatic tumour.](#)

Park JH, Seol JA, Choi HJ, Roh YH, Choi PJ, Lee KE, Roh MS.

Histopathology 2011 Jan; 58(2):315.

Application: IHC, Human, Human colorectal adenocarcinoma

- [Cadherin-17 is a useful diagnostic marker for adenocarcinomas of the digestive system.](#)

Su MC, Yuan RH, Lin CY, Jeng YM.

Modern Pathology 2008 Jun; 21(11):1379.

Application: IHC-P, WB-Ti, Human, Normal and tumor tissues, including kidney, liver, colon, small intestine, stomach, spleen, thyroid, pancreas, placenta

## Disease

- [Depressive Disorder](#)