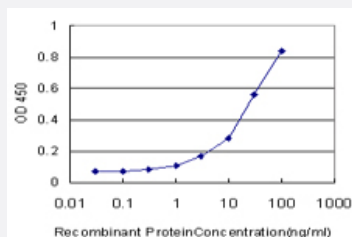


# CDH4 monoclonal antibody (M01), clone 2E2

Catalog # H00001002-M01

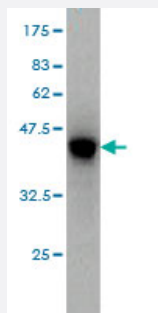
Size 100 ug

## Applications



### Sandwich ELISA (Recombinant protein)

Detection limit for recombinant GST tagged CDH4 is approximately 0.3ng/ml as a capture antibody.



Western Blot detection against Immunogen (36.74 KDa) .

## Specification

### Product Description

Mouse monoclonal antibody raised against a partial recombinant CDH4.

### Immunogen

CDH4 (NP\_001785, 635 a.a. ~ 734 a.a) partial recombinant protein with GST tag. MW of the GST tag alone is 26 KDa.

### Sequence

AADADVDPNIGPYVFELPFVPAAVRKNWTITRLNGDYAQLSLRILYLEAGMYDVPIIVTDSGNPPLS  
NTSIIKVKVCPCDDNGDCTTIGAVAAAGLGTGA

### Host

Mouse

### Reactivity

Human

Interspecies Antigen Sequence	Mouse (92)
Isotype	IgG1 Kappa
Quality Control Testing	Antibody Reactive Against Recombinant Protein. Western Blot detection against Immunogen (36.74 KDa) .
Storage Buffer	In 1x PBS, pH 7.4
Storage Instruction	Store at -20°C or lower. Aliquot to avoid repeated freezing and thawing.

## Applications

- Western Blot (Recombinant protein)

[Protocol Download](#)

- Sandwich ELISA (Recombinant protein)

Detection limit for recombinant GST tagged CDH4 is approximately 0.3ng/ml as a capture antibody.

[Protocol Download](#)

- ELISA

## Gene Info — CDH4

Entrez GeneID	<a href="#">1002</a>
GeneBank Accession#	<a href="#">NM_001794</a>
Protein Accession#	<a href="#">NP_001785</a>
Gene Name	CDH4
Gene Alias	CAD4, FLJ22202, FLJ40547, MGC126700, MGC138355, RCAD
Gene Description	cadherin 4, type 1, R-cadherin (retinal)
Omim ID	<a href="#">603006</a>
Gene Ontology	<a href="#">Hyperlink</a>

**Gene Summary**

This gene is a classical cadherin from the cadherin superfamily. The encoded protein is a calcium-dependent cell-cell adhesion glycoprotein comprised of five extracellular cadherin repeats, a transmembrane region and a highly conserved cytoplasmic tail. Based on studies in chicken and mouse, this cadherin is thought to play an important role during brain segmentation and neuronal outgrowth. In addition, a role in kidney and muscle development is indicated. Of particular interest are studies showing stable cis-heterodimers of cadherins 2 and 4 in cotransfected cell lines. Previously thought to interact in an exclusively homophilic manner, this is the first evidence of cadherin heterodimerization. [provided by RefSeq]

**Other Designations**

OTTHUMP00000031444|R-cadherin|cadherin 4, type 1|cadherin 4, type 1, preproprotein|retinal cadherin

## Pathway

- [Cell adhesion molecules \(CAMs\)](#)

## Disease

- [Cerebral Hemorrhage](#)
- [Chronic Disease](#)
- [Genetic Predisposition to Disease](#)
- [Hypertension](#)
- [Intracranial Hemorrhages](#)
- [Kidney Diseases](#)
- [Stroke](#)
- [Subarachnoid Hemorrhage](#)
- [Tobacco Use Disorder](#)