

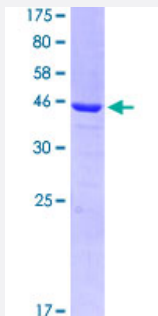
Full-Length

CDC42 (Human) Recombinant Protein (P03)

Catalog # H00000998-P03

Size 25 ug, 10 ug

Applications



Specification

Product Description	Human CDC42 full-length ORF (AAH03682.1, 1 a.a. - 191 a.a.) recombinant protein with GST tag at N-terminal.
Sequence	MQTIKCVVVGDAVGKTCLLISYTTNKFSEYVPTVFDNYAVTMIGGEPYTLGLFDTAGQEDYDR LRPLSYPTDVLVCFVSPSSFENVKEKWVPEITHHCPKTPFLLVGTQIDLRDDPSTIEKLAKN KQKPITPETAEKLRDLKAVKYVECSALTQKGLKNVFDEAILAALEPPEPKSRRCVLL
Host	Wheat Germ (in vitro)
Theoretical MW (kDa)	49.06
Preparation Method	in vitro wheat germ expression system
Purification	Glutathione Sepharose 4 Fast Flow
Quality Control Testing	12.5% SDS-PAGE Stained with Coomassie Blue
Storage Buffer	50 mM Tris-HCl, 10 mM reduced Glutathione, pH=8.0 in the elution buffer.
Storage Instruction	Store at -80°C. Aliquot to avoid repeated freezing and thawing.
Note	Best use within three months from the date of receipt of this protein.

Applications

- Enzyme-linked Immunoabsorbent Assay
- Western Blot (Recombinant protein)
- Antibody Production
- Protein Array

Gene Info — CDC42

Entrez GeneID [998](#)

GeneBank Accession# [BC003682.1](#)

Protein Accession# [AAH03682.1](#)

Gene Name CDC42

Gene Alias CDC42Hs, G25K

Gene Description cell division cycle 42 (GTP binding protein, 25kDa)

Omim ID [116952](#)

Gene Ontology [Hyperlink](#)

Gene Summary

The protein encoded by this gene is a small GTPase of the Rho-subfamily, which regulates signaling pathways that control diverse cellular functions including cell morphology, migration, endocytosis and cell cycle progression. This protein is highly similar to *Saccharomyces cerevisiae* Cdc 42, and is able to complement the yeast *cdc42-1* mutant. The product of oncogene *Dbl* was reported to specifically catalyze the dissociation of GDP from this protein. This protein could regulate actin polymerization through its direct binding to Neural Wiskott-Aldrich syndrome protein (N-WASP), which subsequently activates Arp2/3 complex. Alternative splicing of this gene results in multiple transcript variants. [provided by RefSeq]

Other Designations

GTP-binding protein, 25kD|OTTHUMP00000002834|OTTHUMP00000002926|cell division cycle 42|cell division cycle 42 (GTP binding protein, 25kD)|cell division cycle 42 (GTP-binding protein, 25kD)|dJ224A6.1.1 (cell division cycle 42 (GTP-binding protein, 25kD))|d

Pathway

- [Adherens junction](#)
- [Axon guidance](#)
- [Chemokine signaling pathway](#)
- [Endocytosis](#)
- [Epithelial cell signaling in Helicobacter pylori infection](#)
- [Fc gamma R-mediated phagocytosis](#)
- [Focal adhesion](#)
- [GnRH signaling pathway](#)
- [Leukocyte transendothelial migration](#)
- [MAPK signaling pathway](#)
- [Neurotrophin signaling pathway](#)
- [Pancreatic cancer](#)
- [Pathogenic Escherichia coli infection - EHEC](#)
- [Pathways in cancer](#)
- [Regulation of actin cytoskeleton](#)
- [Renal cell carcinoma](#)
- [T cell receptor signaling pathway](#)
- [Tight junction](#)
- [VEGF signaling pathway](#)

Disease

- [Genetic Predisposition to Disease](#)
- [Hepatitis B](#)
- [HIV Infections](#)
- [Multiple Sclerosis](#)
- [Parkinson disease](#)