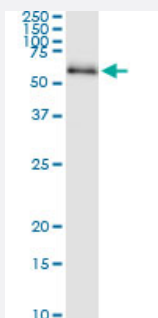


# CDC25C (Human) IP-WB Antibody Pair

Catalog # H00000995-PW1

Size 1 Set

## Applications



Immunoprecipitation of CDC25C transfected lysate using rabbit polyclonal anti-CDC25C and Protein A Magnetic Bead ([U0007](#)), and immunoblotted with mouse polyclonal anti-CDC25C.

## Specification

<b>Product Description</b>	This IP-WB antibody pair set comes with one antibody for immunoprecipitation and another to detect the precipitated protein in western blot.
<b>Reactivity</b>	Human
<b>Quality Control Testing</b>	Immunoprecipitation-Western Blot (IP-WB) Immunoprecipitation of CDC25C transfected lysate using rabbit polyclonal anti-CDC25C and Protein A Magnetic Bead ( <a href="#">U0007</a> ), and immunoblotted with mouse polyclonal anti-CDC25C.
<b>Supplied Product</b>	Antibody pair set content: 1. Antibody pair for IP: rabbit polyclonal anti-CDC25C (300 ul) 2. Antibody pair for WB: mouse polyclonal anti-CDC25C (50 ul)
<b>Storage Instruction</b>	Store reagents of the antibody pair set at -20°C or lower. Please aliquot to avoid repeated freeze thaw cycle. Reagents should be returned to -20°C storage immediately after use.

## Applications

- Immunoprecipitation-Western Blot

[Protocol Download](#)

## Gene Info — CDC25C

Entrez GeneID [995](#)

Gene Name CDC25C

Gene Alias CDC25

Gene Description cell division cycle 25 homolog C (S. pombe)

Omim ID [157680](#)

Gene Ontology [Hyperlink](#)

**Gene Summary** This gene is highly conserved during evolution and it plays a key role in the regulation of cell division. The encoded protein is a tyrosine phosphatase and belongs to the Cdc25 phosphatase family. It directs dephosphorylation of cyclin B-bound CDC2 and triggers entry into mitosis. It is also thought to suppress p53-induced growth arrest. Multiple alternatively spliced transcript variants of this gene have been described, however, the full-length nature of many of them is not known. [provided by RefSeq]

**Other Designations** cell division cycle 25C|cell division cycle 25C protein|dual specificity phosphatase CDC25C|m-phase inducer phosphatase 3|mitosis inducer CDC25|phosphotyrosine phosphatase

## Pathway

- [Cell cycle](#)

## Disease

- [Adenocarcinoma](#)
- [Esophageal Neoplasms](#)
- [Genetic Predisposition to Disease](#)
- [Lung Neoplasms](#)
- [Pulmonary Disease](#)
- [Urinary Bladder Neoplasms](#)
- [Werner syndrome](#)