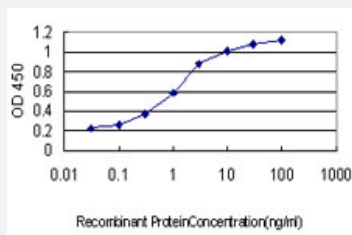


# CDC25A monoclonal antibody (M01), clone 3D5

Catalog # H00000993-M01

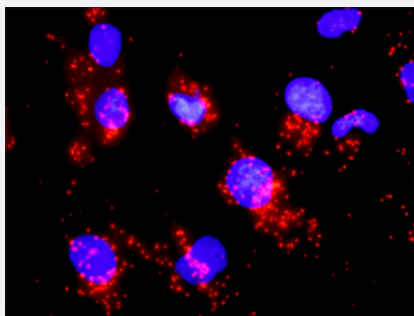
Size 100 ug

## Applications



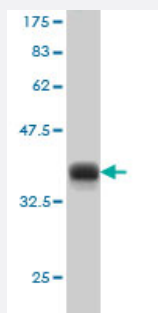
### Sandwich ELISA (Recombinant protein)

Detection limit for recombinant GST tagged CDC25A is approximately 0.03ng/ml as a capture antibody.



### In situ Proximity Ligation Assay (Cell)

Proximity Ligation Analysis of protein-protein interactions between CCNB1 and CDC25A. Mahlavu cells were stained with anti-CCNB1 rabbit purified polyclonal 1:1200 and anti-CDC25A mouse monoclonal antibody 1:50. Each red dot represents the detection of protein-protein interaction complex, and nuclei were counterstained with DAPI (blue).



Western Blot detection against Immunogen (36.63 KDa) .

## Specification

### Product Description

Mouse monoclonal antibody raised against a partial recombinant CDC25A.

Immunogen	CDC25A (AAH07401, 151 a.a. ~ 250 a.a) partial recombinant protein with GST tag. MW of the GST tag alone is 26 KDa.
Sequence	PVRPVSRGCLHSHGLQEGKDLFTQRQNSAPARMLSSNERDSSEPGNFIFLFTPQSPVTATLSDE DDGFVDLLDGENLKNEEETPSCMASLWTAPLVMRTT
Host	Mouse
Reactivity	Human
Isotype	IgG2a Kappa
Quality Control Testing	Antibody Reactive Against Recombinant Protein. Western Blot detection against Immunogen (36.63 KDa) .
Storage Buffer	In 1x PBS, pH 7.4
Storage Instruction	Store at -20°C or lower. Aliquot to avoid repeated freezing and thawing.

## Applications

- Western Blot (Recombinant protein)

[Protocol Download](#)

- Sandwich ELISA (Recombinant protein)

Detection limit for recombinant GST tagged CDC25A is approximately 0.03ng/ml as a capture antibody.

[Protocol Download](#)

- ELISA

- In situ* Proximity Ligation Assay (Cell)

Proximity Ligation Analysis of protein-protein interactions between CCNB1 and CDC25A. Mahlavu cells were stained with anti-CCNB1 rabbit purified polyclonal 1:1200 and anti-CDC25A mouse monoclonal antibody 1:50. Each red dot represents the detection of protein-protein interaction complex, and nuclei were counterstained with DAPI (blue).

## Gene Info — CDC25A

Entrez GeneID	<a href="#">993</a>
GeneBank Accession#	<a href="#">BC007401</a>
Protein Accession#	<a href="#">AAH07401</a>

Gene Name	CDC25A
Gene Alias	CDC25A2
Gene Description	cell division cycle 25 homolog A (S. pombe)
Omim ID	<a href="#">116947</a>
Gene Ontology	<a href="#">Hyperlink</a>
Gene Summary	CDC25A is a member of the CDC25 family of phosphatases. CDC25A is required for progression from G1 to the S phase of the cell cycle. It activates the cyclin-dependent kinase CDC2 by removing two phosphate groups. CDC25A is specifically degraded in response to DNA damage, which prevents cells with chromosomal abnormalities from progressing through cell division. CDC25A is an oncogene, although its exact role in oncogenesis has not been demonstrated. Two transcript variants encoding different isoforms have been found for this gene. [provided by RefSeq]
Other Designations	M-phase inducer phosphatase 1 cell division cycle 25A dual specificity phosphatase CDC25A

## Pathway

- [Cell cycle](#)

## Disease

- [Adenocarcinoma](#)
- [Breast Neoplasms](#)
- [Esophageal Neoplasms](#)
- [Genetic Predisposition to Disease](#)
- [Lung Neoplasms](#)
- [Ovarian Neoplasms](#)
- [Pulmonary Disease](#)
- [Schizophrenia](#)
- [Tobacco Use Disorder](#)
- [Urinary Bladder Neoplasms](#)
- [Werner syndrome](#)