

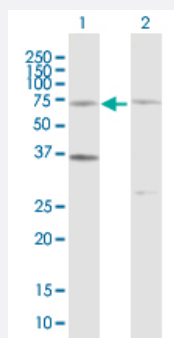
MaxPab®

CDC6 purified MaxPab rabbit polyclonal antibody (D01P)

Catalog # H00000990-D01P

Size 100 ug

Applications

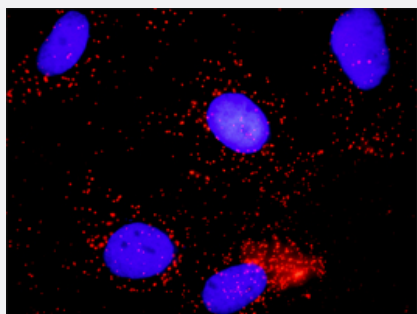


Western Blot (Transfected lysate)

Western Blot analysis of CDC6 expression in transfected 293T cell line ([H00000990-T02](#)) by CDC6 MaxPab polyclonal antibody.

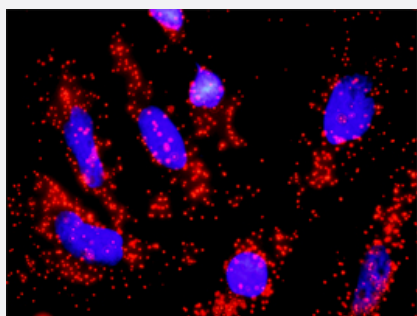
Lane 1: CDC6 transfected lysate (62.70 kDa).

Lane 2: Non-transfected lysate.



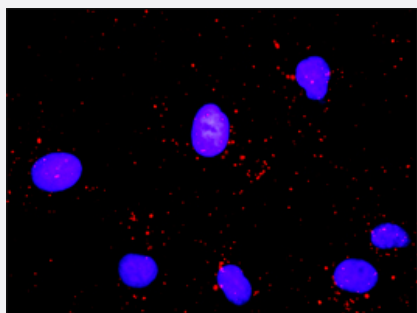
In situ Proximity Ligation Assay (Cell)

Proximity Ligation Analysis of protein-protein interactions between CDC6 and MCM7. Huh7 cells were stained with anti-CDC6 rabbit purified polyclonal 1:600 and anti-MCM7 mouse monoclonal antibody 1:100. Each red dot represents the detection of protein-protein interaction complex, and nuclei were counterstained with DAPI (blue).



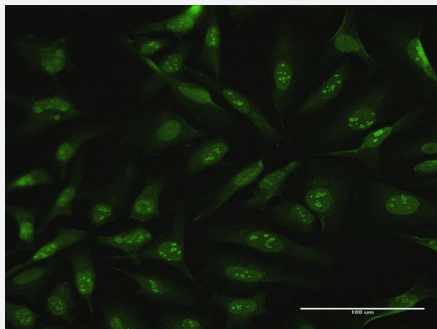
In situ Proximity Ligation Assay (Cell)

Proximity Ligation Analysis of protein-protein interactions between CDC6 and CDKN1A. HeLa cells were stained with anti-CDC6 rabbit purified polyclonal 1:1200 and anti-CDKN1A mouse monoclonal antibody 1:50. Each red dot represents the detection of protein-protein interaction complex, and nuclei were counterstained with DAPI (blue).



In situ Proximity Ligation Assay (Cell)

Proximity Ligation Analysis of protein-protein interactions between CDC6 and PCNA. Mahlavu cells were stained with anti-CDC6 rabbit purified polyclonal 1:1200 and anti-PCNA mouse monoclonal antibody 1:50. Each red dot represents the detection of protein-protein interaction complex, and nuclei were counterstained with DAPI (blue).



Immunofluorescence

Immunofluorescence of purified MaxPab antibody to CDC6 on HeLa cell.
[antibody concentration 10 ug/ml]

Specification

Product Description	Rabbit polyclonal antibody raised against a full-length human CDC6 protein.
Immunogen	CDC6 (AAH25232.1, 1 a.a. ~ 560 a.a) full-length human protein.
Sequence	MPQTRSQAQATISFPKRKLSRALNKAKNSSDAKLEPTNVQTVTCSPRVKALPLSPRKRLGDDNL CNTPHLPPCSPPKQGKKENGPPHSHTLKGRRLVFDNQLTIKSPSKRELAKVHQNKILSSVRKSQE ITTNSEQRCPLKKESACVRLFKQEGTCYQQAQLVLNTAVPDRLPAREREMDVIRNFLREHICGKKA GSLYLSGAPGTGKTACLSRILQDLKKELKGFKTIMLNCMSLRTAQAVFPAIAQEICQEEVSRPAGK DMMRKLEKHMTAEKGPMIVLVLEMDQLDSKGQDVLYTLFEWPWLSNSHLVLIGIANTLDLTDRIL PRLQAREKCKPQLLNFPYTRNQVITLQDRLNQVSRDQVLDNAAVQFCARKVSAVSGDVRKALD VCRAIEVESDVKSQTLKPLSECKSPSEPLIPKRVGLIHISQVISEIDGNRMTLSQEGAQDSFPLQ QKILVCSLMLLIRQLKIKEVTLGKLYEAYSKVCRKQQVAAVDQSECLSLSGLLEARGILGLKRNKET RLTKVFFKIEEKEIEHALKDKALIGNILATGLP
Host	Rabbit
Reactivity	Human
Quality Control Testing	Antibody reactive against mammalian transfected lysate.
Storage Buffer	In 1x PBS, pH 7.4
Storage Instruction	Store at -20°C or lower. Aliquot to avoid repeated freezing and thawing.

Applications

- Western Blot (Transfected lysate)

Western Blot analysis of CDC6 expression in transfected 293T cell line ([H00000990-T02](#)) by CDC6 MaxPab polyclonal antibody.

Lane 1: CDC6 transfected lysate(62.70 KDa).

Lane 2: Non-transfected lysate.

[Protocol Download](#)

- In situ* Proximity Ligation Assay (Cell)

Proximity Ligation Analysis of protein-protein interactions between CDC6 and MCM7. Huh7 cells were stained with anti-CDC6 rabbit purified polyclonal 1:600 and anti-MCM7 mouse monoclonal antibody 1:100. Each red dot represents the detection of protein-protein interaction complex, and nuclei were counterstained with DAPI (blue).

- In situ* Proximity Ligation Assay (Cell)

Proximity Ligation Analysis of protein-protein interactions between CDC6 and CDKN1A. HeLa cells were stained with anti-CDC6 rabbit purified polyclonal 1:1200 and anti-CDKN1A mouse monoclonal antibody 1:50. Each red dot represents the detection of protein-protein interaction complex, and nuclei were counterstained with DAPI (blue).

- In situ* Proximity Ligation Assay (Cell)

Proximity Ligation Analysis of protein-protein interactions between CDC6 and PCNA. Mahlavu cells were stained with anti-CDC6 rabbit purified polyclonal 1:1200 and anti-PCNA mouse monoclonal antibody 1:50. Each red dot represents the detection of protein-protein interaction complex, and nuclei were counterstained with DAPI (blue).

- Immunofluorescence

Immunofluorescence of purified MaxPab antibody to CDC6 on HeLa cell. [antibody concentration 10 ug/ml]

Gene Info — CDC6

Entrez GeneID [990](#)

GeneBank Accession# [BC025232](#)

Protein Accession# [AAH25232.1](#)

Gene Name CDC6

Gene Alias CDC18L, HsCDC18, HsCDC6

Gene Description cell division cycle 6 homolog (S. cerevisiae)

Omim ID [602627](#)

Gene Ontology [Hyperlink](#)

Gene Summary

The protein encoded by this gene is highly similar to *Saccharomyces cerevisiae* Cdc6, a protein essential for the initiation of DNA replication. This protein functions as a regulator at the early step of DNA replication. It localizes in cell nucleus during cell cycle G1, but translocates to the cytoplasm at the start of S phase. The subcellular translocation of this protein during cell cycle is regulated through its phosphorylation by Cdks. Transcription of this protein was reported to be regulated in response to mitogenic signals through transcriptional control mechanism involving E2F proteins. [provided by RefSeq]

Other Designations

CDC18 (cell division cycle 18, *S.pombe*, homolog)-like|CDC6 cell division cycle 6 homolog|CDC6-related protein|cell division cycle 6 protein

Pathway

- [Cell cycle](#)

Disease

- [Carcinoma](#)
- [Genetic Predisposition to Disease](#)
- [Kidney Failure](#)
- [Liver Neoplasms](#)
- [Lymphoma](#)
- [Pulmonary Disease](#)
- [Uterine Cervical Neoplasms](#)