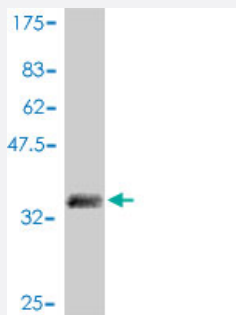


CDC6 polyclonal antibody (A01)

Catalog # H00000990-A01

Size 50 uL

Applications



Western Blot detection against Immunogen (37.11 KDa) .

Specification

Product Description	Mouse polyclonal antibody raised against a partial recombinant CDC6.
Immunogen	CDC6 (NP_001245, 434 a.a. ~ 533 a.a) partial recombinant protein with GST tag.
Sequence	ISQVISEVDGNRMTLSQEGAQDSFPLQQKILVCSLMLLIRQLKIKEVTLGKLYEAYSKVCRKQQVAA VDQSECLSLSGLLLEARGILGLKRNKETRLTKVF
Host	Mouse
Reactivity	Human
Quality Control Testing	Antibody Reactive Against Recombinant Protein. Western Blot detection against Immunogen (37.11 KDa) .
Storage Buffer	50 % glycerol
Storage Instruction	Store at -20°C or lower. Aliquot to avoid repeated freezing and thawing.

Applications

- Western Blot (Recombinant protein)

[Protocol Download](#)

- ELISA

Gene Info — CDC6

Entrez GeneID [990](#)

GeneBank Accession# [NM_001254](#)

Protein Accession# [NP_001245](#)

Gene Name CDC6

Gene Alias CDC18L, HsCDC18, HsCDC6

Gene Description cell division cycle 6 homolog (S. cerevisiae)

Omim ID [602627](#)

Gene Ontology [Hyperlink](#)

Gene Summary The protein encoded by this gene is highly similar to Saccharomyces cerevisiae Cdc6, a protein essential for the initiation of DNA replication. This protein functions as a regulator at the early step s of DNA replication. It localizes in cell nucleus during cell cyle G1, but translocates to the cytoplas m at the start of S phase. The subcellular translocation of this protein during cell cyle is regulated t hrough its phosphorylation by Cdks. Transcription of this protein was reported to be regulated in r esponse to mitogenic signals through transcriptional control mechanism involving E2F proteins. [p rovided by RefSeq

Other Designations CDC18 (cell division cycle 18, S.pombe, homolog)-like|CDC6 cell division cycle 6 homolog|CDC 6-related protein|cell division cycle 6 protein

Pathway

- [Cell cycle](#)

Disease

- [Carcinoma](#)
- [Genetic Predisposition to Disease](#)

- [Kidney Failure](#)
- [Liver Neoplasms](#)
- [Lymphoma](#)
- [Pulmonary Disease](#)
- [Uterine Cervical Neoplasms](#)