

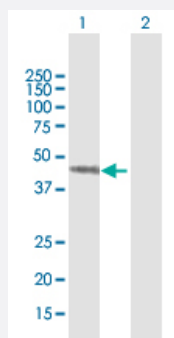
MaxPab®

SEPT7 purified MaxPab mouse polyclonal antibody (B01P)

Catalog # H00000989-B01P

Size 50 ug

Applications



Western Blot (Transfected lysate)

Western Blot analysis of SEPT7 expression in transfected 293T cell line ([H00000989-T02](#)) by SEPT7 MaxPab polyclonal antibody.

Lane 1: SEPT7 transfected lysate(45.98 KDa).

Lane 2: Non-transfected lysate.

Specification

Product Description

Mouse polyclonal antibody raised against a full-length human SEPT7 protein.

Immunogen

SEPT7 (NP_001779, 1 a.a. ~ 418 a.a) full-length human protein.

Sequence

MVAQQKNLEGYVGAFANLPNQVYRKSVKRGFEFTLMVVGESGLGKSTLINSFLTDLYSPEYGPS
HRIKKTQVEQSKVLKEGGVQLLLTVDTPGFGDAVDNSNCWQPVIDYDSKFEDYLNESRVNR
RQMPDNRVQCCLYFIAPSGHGLKPLDIEFMKRLHEKVNIPLIAKADTLTPEECQQFKKQIMKEIQEH
KIKYEFPETDDEEENKLVKKIKDRLPLAVVGSNTIIEVNGKRVGRQYPWGVAEVENGEHCDFIL
RNMLIRTHMQDLKDVTNNVHYENYRSRKLAAVTYNGVDNNKNKGQLTKSPLAQMEERREHVAK
MKKMEMEMEQQVFEMKVKEKVQKLKDSEAEQQRRHEQMKNLEAQHKELEEKRRQFEDEKAN
WEAQQRILEQQNSSRTLEKNKKKGKIF

Host

Mouse

Reactivity

Human

Interspecies Antigen Sequence

Mouse (99); Rat (99)

Quality Control Testing

Antibody reactive against mammalian transfected lysate.

Storage Buffer

In 1x PBS, pH 7.4

Storage Instruction

Store at -20°C or lower. Aliquot to avoid repeated freezing and thawing.

Applications

- Western Blot (Transfected lysate)

Western Blot analysis of SEPT7 expression in transfected 293T cell line ([H00000989-T02](#)) by SEPT7 MaxPab polyclonal antibody.

Lane 1: SEPT7 transfected lysate(45.98 KDa).

Lane 2: Non-transfected lysate.

[Protocol Download](#)

Gene Info — SEPT7

Entrez GeneID [989](#)

GeneBank Accession# [NM_001788](#)

Protein Accession# [NP_001779](#)

Gene Name SEPT7

Gene Alias CDC10, CDC3, Nbla02942, SEPT7A

Gene Description septin 7

Omim ID [603151](#)

Gene Ontology [Hyperlink](#)

Gene Summary This gene encodes a protein that is highly similar to the CDC10 protein of *Saccharomyces cerevisiae*. The protein also shares similarity with Diff 6 of *Drosophila* and with H5 of mouse. Each of these similar proteins, including the yeast CDC10, contains a GTP-binding motif. The yeast CDC10 protein is a structural component of the 10 nm filament which lies inside the cytoplasmic membrane and is essential for cytokinesis. Although the exact function of this gene has not yet been determined, its high similarity to yeast CDC10 and the high conservative nature of eukaryotic cell cycle machinery suggest a similar role to that of its yeast counterpart. Alternative splicing results in two transcript variants encoding different isoforms. [provided by RefSeq]

Other Designations CDC10 (cell division cycle 10, *S. cerevisiae*, homolog)|CDC10 cell division cycle 10 homolog|cell division cycle 10

Disease

- [Tobacco Use Disorder](#)