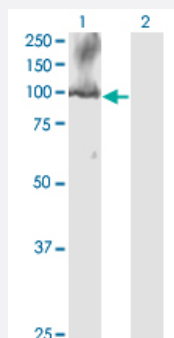


CDC5L monoclonal antibody (M08), clone 3C12

Catalog # H00000988-M08

Size 100 ug

Applications

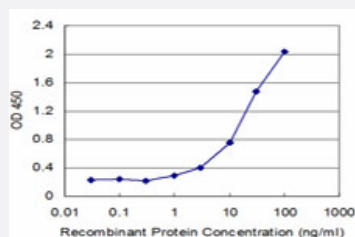


Western Blot (Transfected lysate)

Western Blot analysis of CDC5L expression in transfected 293T cell line by CDC5L monoclonal antibody (M08), clone 3C12.

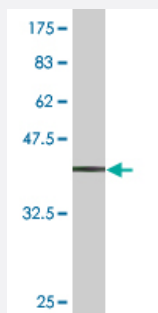
Lane 1: CDC5L transfected lysate(92.3 KDa).

Lane 2: Non-transfected lysate.



Sandwich ELISA (Recombinant protein)

Detection limit for recombinant GST tagged CDC5L is approximately 1ng/ml as a capture antibody.



Western Blot detection against Immunogen (34.98 KDa) .

Specification

Product Description

Mouse monoclonal antibody raised against a partial recombinant CDC5L.

| | |
|--------------------------------------|--|
| Immunogen | CDC5L (NP_001244, 719 a.a. ~ 802 a.a) partial recombinant protein with GST tag. MW of the GST tag alone is 26 KDa. |
| Sequence | ILLGGYQSRAMGLMKQLNDLWDQIEQAHLELRTEELKKHEDSAIPRRLECLKEDVQRQQEREKE LQHRYADLLLEKETLKSKF |
| Host | Mouse |
| Reactivity | Human |
| Interspecies Antigen Sequence | Mouse (95); Rat (94) |
| Isotype | IgG2a Kappa |
| Quality Control Testing | Antibody Reactive Against Recombinant Protein. Western Blot detection against Immunogen (34.98 KDa) . |
| Storage Buffer | In 1x PBS, pH 7.4 |
| Storage Instruction | Store at -20°C or lower. Aliquot to avoid repeated freezing and thawing. |

Applications

- Western Blot (Transfected lysate)

Western Blot analysis of CDC5L expression in transfected 293T cell line by CDC5L monoclonal antibody (M08), clone 3C12.

Lane 1: CDC5L transfected lysate(92.3 KDa).

Lane 2: Non-transfected lysate.

[Protocol Download](#)

- Western Blot (Recombinant protein)

[Protocol Download](#)

- Sandwich ELISA (Recombinant protein)

Detection limit for recombinant GST tagged CDC5L is approximately 1ng/ml as a capture antibody.

[Protocol Download](#)

- ELISA

Gene Info — CDC5L

| | |
|---------------------|---|
| Entrez GeneID | 988 |
| GeneBank Accession# | NM_001253 |
| Protein Accession# | NP_001244 |
| Gene Name | CDC5L |
| Gene Alias | CEF1, KIAA0432, PCDC5RP, dJ319D22.1, hCDC5 |
| Gene Description | CDC5 cell division cycle 5-like (S. pombe) |
| Omim ID | 602868 |
| Gene Ontology | Hyperlink |
| Gene Summary | The protein encoded by this gene shares a significant similarity with Schizosaccharomyces pombe cdc5 gene product, which is a cell cycle regulator important for G2/M transition. This protein has been demonstrated to act as a positive regulator of cell cycle G2/M progression. It was also found to be an essential component of a non-snRNA spliceosome, which contains at least five additional protein factors and is required for the second catalytic step of pre-mRNA splicing. [provided by RefSeq] |
| Other Designations | CDC5 (cell division cycle 5, S. pombe, homolog)-like CDC5-like Cdc5-related protein Cell division cycle 5, S. pombe, homolog-like OTTHUMP00000016529 dJ319D22.1 (CDC5-like protein) |

Disease

- [Celiac Disease](#)
- [Genetic Predisposition to Disease](#)