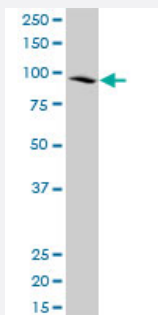


CDC5L polyclonal antibody (A01)

Catalog # H00000988-A01

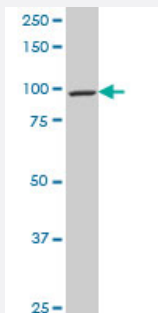
Size 50 uL

Applications



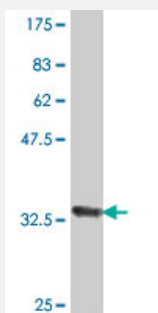
Western Blot (Cell lysate)

CDC5L polyclonal antibody (A01), Lot # 060814QCS1. Western Blot analysis of CDC5L expression in 293.



Western Blot (Cell lysate)

CDC5L polyclonal antibody (A01), Lot # 051214JC01 Western Blot analysis of CDC5L expression in Jurkat (Cat # L017V1).



Western Blot detection against Immunogen (35.35 KDa) .

Specification

Product Description

Mouse polyclonal antibody raised against a partial recombinant CDC5L.

Immunogen

CDC5L (NP_001244, 719 a.a. ~ 802 a.a) partial recombinant protein with GST tag.

Sequence	ILLGGYQSRAMGLMKQLNDLWDQIEQAHLELRTEELKKHEDSAIPRRLECLKEDVQRQQEREKE LQHRYADLLLEKETLKSKF
Host	Mouse
Reactivity	Human
Interspecies Antigen Sequence	Mouse (95); Rat (94)
Quality Control Testing	Antibody Reactive Against Recombinant Protein. Western Blot detection against Immunogen (35.35 KDa) .
Storage Buffer	50 % glycerol
Storage Instruction	Store at -20°C or lower. Aliquot to avoid repeated freezing and thawing.

Applications

- Western Blot (Cell lysate)

CDC5L polyclonal antibody (A01), Lot # 060814QCS1. Western Blot analysis of CDC5L expression in 293.

[Protocol Download](#)

- Western Blot (Cell lysate)

CDC5L polyclonal antibody (A01), Lot # 051214JC01 Western Blot analysis of CDC5L expression in Jurkat (Cat # L017V1).

[Protocol Download](#)

- Western Blot (Recombinant protein)

[Protocol Download](#)

- ELISA

Gene Info — CDC5L

Entrez GeneID	988
GeneBank Accession#	NM_001253
Protein Accession#	NP_001244
Gene Name	CDC5L

Gene Alias	CEF1, KIAA0432, PCDC5RP, dJ319D22.1, hCDC5
Gene Description	CDC5 cell division cycle 5-like (S. pombe)
Omim ID	602868
Gene Ontology	Hyperlink
Gene Summary	<p>The protein encoded by this gene shares a significant similarity with Schizosaccharomyces pombe cdc5 gene product, which is a cell cycle regulator important for G2/M transition. This protein has been demonstrated to act as a positive regulator of cell cycle G2/M progression. It was also found to be an essential component of a non-snRNA spliceosome, which contains at least five additional protein factors and is required for the second catalytic step of pre-mRNA splicing. [provided by RefSeq]</p>
Other Designations	CDC5 (cell division cycle 5, S. pombe, homolog)-like CDC5-like Cdc5-related protein Cell division cycle 5, S. pombe, homolog-like OTTHUMP00000016529 dJ319D22.1 (CDC5-like protein)

Disease

- [Celiac Disease](#)
- [Genetic Predisposition to Disease](#)