

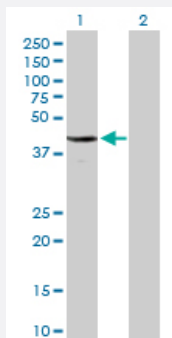
MaxPab®

CDC2 purified MaxPab rabbit polyclonal antibody (D01P)

Catalog # H00000983-D01P

Size 100 ug

Applications

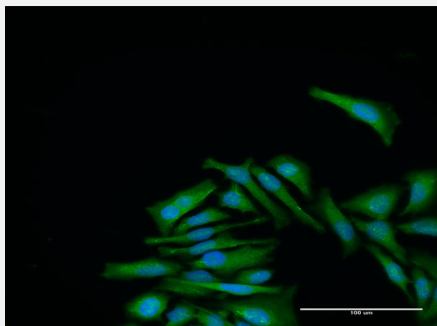


Western Blot (Transfected lysate)

Western Blot analysis of CDC2 expression in transfected 293T cell line ([H00000983-T02](#)) by CDC2 MaxPab polyclonal antibody.

Lane 1: CDC2 transfected lysate(34.10 KDa).

Lane 2: Non-transfected lysate.



Immunofluorescence

Immunofluorescence of purified MaxPab antibody to CDC2 on HeLa cell. [antibody concentration 30 ug/ml]

Specification

Product Description

Rabbit polyclonal antibody raised against a full-length human CDC2 protein.

Immunogen

CDC2 (NP_001777.1, 1 a.a. ~ 297 a.a) full-length human protein.

Sequence

MEDYTKIEKIGEGTYGVVYKGRHKTTGQVVAMKKIRLESEEEGVPSTAIRESLLKELRHPNIVSLQD
VLMQDSRLYLIFEFLSMDLKKYLD SIPP GQYMDSSLVKS YLYQILQGIVFCHSRRVLHRDLKPQNLLI
DDKGTIKLADFG LARAFGIPIRVYTHEVVTLWYRSPEVLLGSARYSTPVDWISGTF AELATKKPLFH
GDSEIDQLFRIFRALGTPNNEVWPEVESLQDYKNTFPKWKPGSLASHVKNLDENGLDLLSKMLIY
DPAKRISGKMALNHPYFNDLDN QIKKM

Host

Rabbit

Reactivity	Human
Quality Control Testing	Antibody reactive against mammalian transfected lysate.
Storage Buffer	In 1x PBS, pH 7.4
Storage Instruction	Store at -20°C or lower. Aliquot to avoid repeated freezing and thawing.

Applications

- Western Blot (Transfected lysate)

Western Blot analysis of CDC2 expression in transfected 293T cell line ([H00000983-T02](#)) by CDC2 MaxPab polyclonal antibody.

Lane 1: CDC2 transfected lysate(34.10 KDa).

Lane 2: Non-transfected lysate.

[Protocol Download](#)

- Immunofluorescence

Immunofluorescence of purified MaxPab antibody to CDC2 on HeLa cell. [antibody concentration 30 ug/ml]

Gene Info — CDC2

Entrez GeneID	983
GeneBank Accession#	NM_001786.2
Protein Accession#	NP_001777.1
Gene Name	CDC2
Gene Alias	CDC28A, CDK1, DKFZp686L20222, MGC111195
Gene Description	cell division cycle 2, G1 to S and G2 to M
Omim ID	116940
Gene Ontology	Hyperlink

Gene Summary

The protein encoded by this gene is a member of the Ser/Thr protein kinase family. This protein is a catalytic subunit of the highly conserved protein kinase complex known as M-phase promoting factor (MPF), which is essential for G1/S and G2/M phase transitions of eukaryotic cell cycle. Mitotic cyclins stably associate with this protein and function as regulatory subunits. The kinase activity of this protein is controlled by cyclin accumulation and destruction through the cell cycle. The phosphorylation and dephosphorylation of this protein also play important regulatory roles in cell cycle control. Alternatively spliced transcript variants encoding different isoforms have been found for this gene. [provided by RefSeq]

Other Designations

OTTHUMP00000019660|cell cycle controller CDC2|cell division control protein 2 homolog|cell division cycle 2 protein|cyclin-dependent kinase 1|p34 protein kinase

Pathway

- [Cell cycle](#)
- [Gap junction](#)
- [p53 signaling pathway](#)

Disease

- [Alzheimer disease](#)
- [Breast cancer](#)
- [Breast Neoplasms](#)
- [Dementia](#)
- [Genetic Predisposition to Disease](#)
- [Lung Neoplasms](#)
- [Pulmonary Disease](#)