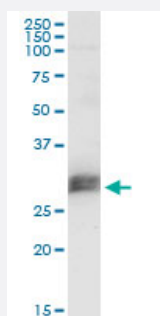


CD151 monoclonal antibody (M02), clone 1B2

Catalog # H00000977-M02

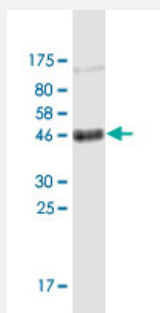
Size 100 ug

Applications



Western Blot (Tissue lysate)

CD151 monoclonal antibody (M02), clone 1B2. Western Blot analysis of CD151 expression in human pancreas.



Western Blot detection against Immunogen (53.57 KDa) .

Specification

Product Description

Mouse monoclonal antibody raised against a full-length recombinant CD151.

Immunogen

CD151 (AAH01374.1, 1 a.a. ~ 253 a.a) full-length recombinant protein with GST tag. MW of the GST tag alone is 26 KDa.

Sequence

MGEFNEKKTTCGTVCLKYLLFTYNCCLWLAGLAVMAVGWTLALKSDYISLLASGTYLATAYILVVA
GTVVMVTGVLGCCATFKERRNLLRLYFILLLIIFLLEIIAGILAYAYYQQLNTELKENLKDTMTKRYHQP
GHEAVTSAVDQLQQEFHCCGSNNSQDWRDSEWIRSQEAGGRVVPDSCCKTVVALCGQRDHA
SNIYKVEGGCITKLETFIQEHLRVIGAVGIGIACVQVFGMFTCCLYRSLKLEHY

Host

Mouse

Reactivity

Human

Interspecies Antigen Sequence	Mouse (93); Rat (92)
Isotype	IgG2a Kappa
Quality Control Testing	Antibody Reactive Against Recombinant Protein. Western Blot detection against Immunogen (53.57 KDa) .
Storage Buffer	In 1x PBS, pH 7.4
Storage Instruction	Store at -20°C or lower. Aliquot to avoid repeated freezing and thawing.

Applications

- Western Blot (Tissue lysate)

CD151 monoclonal antibody (M02), clone 1B2. Western Blot analysis of CD151 expression in human pancreas.

[Protocol Download](#)

- Western Blot (Recombinant protein)

[Protocol Download](#)

- ELISA

Gene Info — CD151

Entrez GeneID	977
GeneBank Accession#	BC001374
Protein Accession#	AAH01374.1
Gene Name	CD151
Gene Alias	GP27, MER2, PETA-3, RAPH, SFA1, TSPAN24
Gene Description	CD151 molecule (Raph blood group)
Omim ID	179620 602243 609057
Gene Ontology	Hyperlink

Gene Summary

The protein encoded by this gene is a member of the transmembrane 4 superfamily, also known as the tetraspanin family. Most of these members are cell-surface proteins that are characterized by the presence of four hydrophobic domains. The proteins mediate signal transduction events that play a role in the regulation of cell development, activation, growth and motility. This encoded protein is a cell surface glycoprotein that is known to complex with integrins and other transmembrane 4 superfamily proteins. It is involved in cellular processes including cell adhesion and may regulate integrin trafficking and/or function. This protein enhances cell motility, invasion and metastasis of cancer cells. Multiple alternatively spliced transcript variants that encode the same protein have been described for this gene. [provided by RefSeq]

Other Designations

CD151 antigen|CD151 antigen (Raph blood group)|OTTHUMP00000164434|hemidesmosomal tetraspanin CD151|membrane glycoprotein SFA-1|platelet surface glycoprotein gp27|platelet-endothelial cell tetraspan antigen 3