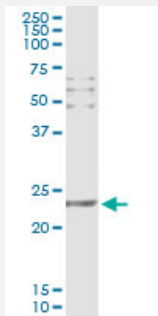


# CD69 (Human) IP-WB Antibody Pair

Catalog # H00000969-PW1

Size 1 Set

## Applications



Immunoprecipitation of CD69 transfected lysate using mouse monoclonal anti-CD69 and Protein A Magnetic Bead ([U0007](#)), and immunoblotted with rabbit polyclonal anti-CD69.

## Specification

|                                |  |
|--------------------------------|--|
| <b>Product Description</b>     | This IP-WB antibody pair set comes with one antibody for immunoprecipitation and another to detect the precipitated protein in western blot.   |
| <b>Reactivity</b>              | Human  |
| <b>Quality Control Testing</b> | Immunoprecipitation-Western Blot (IP-WB)<br>Immunoprecipitation of CD69 transfected lysate using mouse monoclonal anti-CD69 and Protein A Magnetic Bead ( <a href="#">U0007</a> ), and immunoblotted with rabbit polyclonal anti-CD69. |
| <b>Supplied Product</b>        | Antibody pair set content:<br>1. Antibody pair for IP: mouse monoclonal anti-CD69 (300 ug)<br>2. Antibody pair for WB: rabbit polyclonal anti-CD69 (50 ul)   |
| <b>Storage Instruction</b>     | Store reagents of the antibody pair set at -20°C or lower. Please aliquot to avoid repeated freeze thaw cycle. Reagents should be returned to -20°C storage immediately after use.   |

## Applications

- Immunoprecipitation-Western Blot

[Protocol Download](#)

## Gene Info — CD69

|                    |  |
|--------------------|--|
| Entrez GeneID      | <a href="#">969</a>  |
| Gene Name          | CD69   |
| Gene Alias         | CLEC2C   |
| Gene Description   | CD69 molecule  |
| Omim ID            | <a href="#">107273</a>   |
| Gene Ontology      | <a href="#">Hyperlink</a>  |
| Gene Summary       | This gene encodes a member of the calcium dependent lectin superfamily of type II transmembrane receptors. Expression of the encoded protein is induced upon activation of T lymphocytes, and may play a role in proliferation. Furthermore, the protein may act to transmit signals in natural killer cells and platelets. Alternative splicing results in multiple transcript variants |
| Other Designations | C-type lectin domain family 2, member C CD69 antigen (p60, early T-cell activation antigen)  |

## Disease

- [Addison Disease](#)
- [Arthritis](#)
- [Diabetes Mellitus](#)
- [Genetic Predisposition to Disease](#)