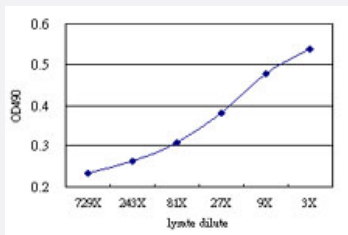


CD69 (Human) Matched Antibody Pair

Catalog # H00000969-AP51

Size 1 Set

Applications



Sandwich ELISA detection sensitivity ranging from approximately 81x to 3x dilution of the CD69 293T overexpression lysate (non-denatured).

Specification

Product Description

This antibody pair set comes with a matched antibody pair to detect and quantify the protein level of human CD69.

Reactivity

Human

Quality Control Testing

Standard curve using CD69 293T overexpression lysate (non-denatured) as an analyte. Sandwich ELISA detection sensitivity ranging from approximately 81x to 3x dilution of the CD69 293T overexpression lysate (non-denatured).

Supplied Product

Antibody pair set content:

1. Capture antibody: mouse monoclonal anti-CD69 (100 ug)
2. Detection antibody: rabbit purified polyclonal anti-CD69 (50 ug)

*Reagents are sufficient for at least 3-5 x 96 well plates using recommended protocols.

Storage Instruction

Store reagents of the antibody pair set at -20°C or lower. Please aliquot to avoid repeated freeze thaw cycle. Reagents should be returned to -20°C storage immediately after use.

Applications

- ELISA Pair (Transfected lysate)

[Protocol Download](#)

Gene Info — CD69

Entrez GeneID	969
Gene Name	CD69
Gene Alias	CLEC2C
Gene Description	CD69 molecule
Omim ID	107273
Gene Ontology	Hyperlink
Gene Summary	This gene encodes a member of the calcium dependent lectin superfamily of type II transmembrane receptors. Expression of the encoded protein is induced upon activation of T lymphocytes, and may play a role in proliferation. Furthermore, the protein may act to transmit signals in natural killer cells and platelets. Alternative splicing results in multiple transcript variants
Other Designations	C-type lectin domain family 2, member C CD69 antigen (p60, early T-cell activation antigen)

Disease

- [Addison Disease](#)
- [Arthritis](#)
- [Diabetes Mellitus](#)
- [Genetic Predisposition to Disease](#)