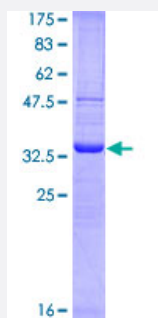


CD68 (Human) Recombinant Protein (Q01)

Catalog # H00000968-Q01

Size 25 ug, 10 ug

Applications



Specification

Product Description	Human CD68 partial ORF (NP_001242, 164 a.a. - 262 a.a.) recombinant protein with GST-tag at N-terminal.
Sequence	NGSQPCVHLQAQIRVMYTTQGGGEAWGISVLNPNKTKVQGSCEGAHPHLLLSFPYGHLSFGFM QDLQQKVYLSYMAVEYNVSFPHAAKWTFSAQNA
Host	Wheat Germ (in vitro)
Theoretical MW (kDa)	36.63
Interspecies Antigen Sequence	Rat (76)
Preparation Method	in vitro wheat germ expression system
Purification	Glutathione Sepharose 4 Fast Flow
Quality Control Testing	12.5% SDS-PAGE Stained with Coomassie Blue.
Storage Buffer	50 mM Tris-HCl, 10 mM reduced Glutathione, pH=8.0 in the elution buffer.
Storage Instruction	Store at -80°C. Aliquot to avoid repeated freezing and thawing.
Note	Best use within three months from the date of receipt of this protein.

Applications

- Enzyme-linked Immunoabsorbent Assay
- Western Blot (Recombinant protein)
- Antibody Production
- Protein Array

Gene Info — CD68

Entrez GeneID [968](#)

GeneBank Accession# [NM_001251](#)

Protein Accession# [NP_001242](#)

Gene Name CD68

Gene Alias DKFZp686M18236, GP110, SCARD1

Gene Description CD68 molecule

Omim ID [153634](#)

Gene Ontology [Hyperlink](#)

Gene Summary This gene encodes a 110-kD transmembrane glycoprotein that is highly expressed by human monocytes and tissue macrophages. It is a member of the lysosomal/endosomal-associated membrane glycoprotein (LAMP) family. The protein primarily localizes to lysosomes and endosomes with a smaller fraction circulating to the cell surface. It is a type I integral membrane protein with a heavily glycosylated extracellular domain and binds to tissue- and organ-specific lectins or selectins. The protein is also a member of the scavenger receptor family. Scavenger receptors typically function to clear cellular debris, promote phagocytosis, and mediate the recruitment and activation of macrophages. Alternative splicing results in multiple transcripts encoding different isoforms. [provided by RefSeq]

Other Designations CD68 antigen|OTTHUMP00000135285|macrophage antigen CD68|macrosialin|scavenger receptor class D, member 1

Pathway

- [Lysosome](#)