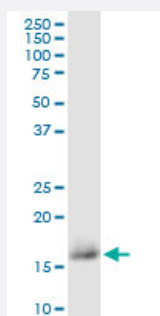


# CD59 monoclonal antibody (M02), clone 3G6

Catalog # H00000966-M02

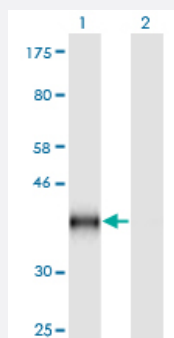
Size 100 ug

## Applications



### Western Blot (Cell lysate)

CD59 monoclonal antibody (M02), clone 3G6. Western Blot analysis of CD59 expression in HeLa.

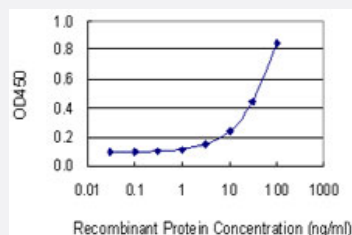


### Western Blot (Transfected lysate)

Western Blot analysis of CD59 expression in transfected 293T cell line by CD59 monoclonal antibody (M02), clone 3G6.

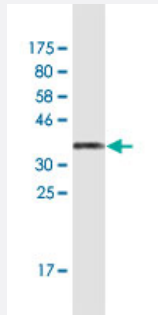
Lane 1: CD59 transfected lysate (Predicted MW: 41.2 KDa).

Lane 2: Non-transfected lysate.



### Sandwich ELISA (Recombinant protein)

Detection limit for recombinant GST tagged CD59 is 1 ng/ml as a capture antibody.



Western Blot detection against Immunogen (40.6 KDa) .

## Specification

<b>Product Description</b>	Mouse monoclonal antibody raised against a full-length recombinant CD59.
<b>Immunogen</b>	CD59 (NP_000602.1, 1 a.a. ~ 128 a.a) full-length recombinant protein with GST tag. MW of the GST tag alone is 26 KDa.
<b>Sequence</b>	MGIQGGSVLFGLLLVLAVFCHSGHSLQCYNCPNPTADCKTAVNCSSDFDACLITKAGLQVYNKC WKFEHCNFDVTTRLRENELTYCCKKDL CNFNEQLENGGTSLSKTVLLLVTPLAAAWSLHP
<b>Host</b>	Mouse
<b>Reactivity</b>	Human
<b>Isotype</b>	IgG2a Kappa
<b>Quality Control Testing</b>	Antibody Reactive Against Recombinant Protein. Western Blot detection against Immunogen (40.6 KDa) .
<b>Storage Buffer</b>	In 1x PBS, pH 7.4
<b>Storage Instruction</b>	Store at -20°C or lower. Aliquot to avoid repeated freezing and thawing.

## Applications

- Western Blot (Cell lysate)

CD59 monoclonal antibody (M02), clone 3G6. Western Blot analysis of CD59 expression in HeLa.

[Protocol Download](#)

- Western Blot (Transfected lysate)

Western Blot analysis of CD59 expression in transfected 293T cell line by CD59 monoclonal antibody (M02), clone 3G6.

Lane 1: CD59 transfected lysate (Predicted MW: 41.2 KDa).

Lane 2: Non-transfected lysate.

[Protocol Download](#)

- Western Blot (Recombinant protein)

[Protocol Download](#)

- Sandwich ELISA (Recombinant protein)

Detection limit for recombinant GST tagged CD59 is 1 ng/ml as a capture antibody.

[Protocol Download](#)

- ELISA

## Gene Info — CD59

Entrez GeneID	<a href="#">966</a>
GeneBank Accession#	<a href="#">NM_000611.4</a>
Protein Accession#	<a href="#">NP_000602.1</a>
Gene Name	CD59
Gene Alias	16.3A5, 1F5, EJ16, EJ30, EL32, FLJ38134, FLJ92039, G344, HRF-20, HRF20, MAC-IP, MAC1 F, MEM43, MGC2354, MIC11, MIN1, MIN2, MIN3, MIRL, MSK21, p18-20
Gene Description	CD59 molecule, complement regulatory protein
Omim ID	<a href="#">107271</a>
Gene Ontology	<a href="#">Hyperlink</a>
Gene Summary	This gene encodes a cell surface glycoprotein that regulates complement-mediated cell lysis, and it is involved in lymphocyte signal transduction. This protein is a potent inhibitor of the complement membrane attack complex, whereby it binds complement C8 and/or C9 during the assembly of this complex, thereby inhibiting the incorporation of multiple copies of C9 into the complex, which is necessary for osmolytic pore formation. This protein also plays a role in signal transduction pathways in the activation of T cells. Mutations in this gene cause CD59 deficiency, a disease resulting in hemolytic anemia and thrombosis, and which causes cerebral infarction. Multiple alternatively spliced transcript variants, which encode the same protein, have been identified for this gene. [provided by RefSeq]

**Other Designations**

20 kDa homologous restriction factor|CD59 antigen|CD59 antigen p18-20 (antigen identified by monoclonal antibodies 16.3A5, EJ16, EJ30, EL32 and G344)|CD59 glycoprotein|Ly-6-like protein|T cell-activating protein|human leukocyte antigen MIC11|lymphocyte a

**Pathway**

- [Complement and coagulation cascades](#)
- [Hematopoietic cell lineage](#)

**Disease**

- [Genetic Predisposition to Disease](#)
- [Lymphoma](#)
- [Macular Degeneration](#)