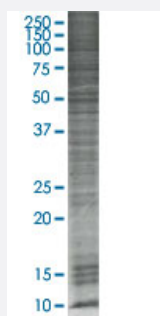


CD47 293T Cell Transient Overexpression Lysate(Denatured)

Catalog # H00000961-T04

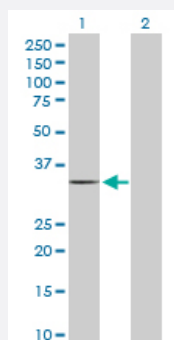
Size 100 uL

Applications



SDS-PAGE Gel

CD47 transfected lysate.



Western Blot

Lane 1: CD47 transfected lysate (35.2 KDa)

Lane 2: Non-transfected lysate.

Specification

Transfected Cell Line	293T
Plasmid	pCMV-CD47 full-length
Host	Human
Theoretical MW (kDa)	35.2
Interspecies Antigen Sequence	Mouse (66); Rat (70)

Quality Control Testing

Transient overexpression cell lysate was tested with Anti-CD47 antibody ([H00000961-D01P](#)) by Western Blots.
 SDS-PAGE Gel
 CD47 transfected lysate.
 Western Blot
 Lane 1: CD47 transfected lysate (35.2 KDa)
 Lane 2: Non-transfected lysate.

Storage Buffer

1X Sample Buffer (50 mM Tris-HCl, 2% SDS, 10% glycerol, 300 mM 2-mercaptoethanol, 0.01% Bromophenol blue)

Storage Instruction

Store at -80°C. Aliquot to avoid repeated freezing and thawing.

Applications

- Western Blot

Gene Info — CD47

Entrez GeneID

[961](#)

GeneBank Accession#

[NM_001777](#)

Protein Accession#

[NP_001768.1](#)

Gene Name

CD47

Gene Alias

IAP, MER6, OA3

Gene Description

CD47 molecule

Omim ID

[601028](#)

Gene Ontology

[Hyperlink](#)

Gene Summary

This gene encodes a membrane protein, which is involved in the increase in intracellular calcium concentration that occurs upon cell adhesion to extracellular matrix. The encoded protein is also a receptor for the C-terminal cell binding domain of thrombospondin, and it may play a role in membrane transport and signal transduction. This gene has broad tissue distribution, and is reduced in expression on Rh erythrocytes. Four alternatively spliced transcript variants encoding distinct isoforms have been found for this gene. [provided by RefSeq]

Other Designations

CD47 antigen|CD47 antigen (Rh-related antigen, integrin-associated signal transducer)|CD47 glycoprotein|Rh-related antigen|antigen identified by monoclonal antibody 1D8|antigenic surface determinant protein OA3|integrin associated protein|integrin-associated

Pathway

- [ECM-receptor interaction](#)