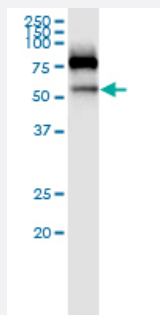


SIGLEC6 (Human) IP-WB Antibody Pair

Catalog # H00000946-PW3

Size 1 Set

Applications



Immunoprecipitation of SIGLEC6 transfected lysate using rabbit polyclonal anti-SIGLEC6 and Protein A Magnetic Bead ([U0007](#)), and immunoblotted with mouse purified polyclonal anti-SIGLEC6.

Specification

Product Description	This IP-WB antibody pair set comes with one antibody for immunoprecipitation and another to detect the precipitated protein in western blot.
Reactivity	Human
Quality Control Testing	Immunoprecipitation-Western Blot (IP-WB) Immunoprecipitation of SIGLEC6 transfected lysate using rabbit polyclonal anti-SIGLEC6 and Protein A Magnetic Bead (U0007), and immunoblotted with mouse purified polyclonal anti-SIGLEC6.
Supplied Product	Antibody pair set content: 1. Antibody pair for IP: rabbit polyclonal anti-SIGLEC6 (300 ul) 2. Antibody pair for WB: mouse purified polyclonal anti-SIGLEC6 (50 ug)
Storage Instruction	Store reagents of the antibody pair set at -20°C or lower. Please aliquot to avoid repeated freeze thaw cycle. Reagents should be returned to -20°C storage immediately after use.

Applications

- Immunoprecipitation-Western Blot

[Protocol Download](#)

Gene Info — SIGLEC6

Entrez GeneID	946
Gene Name	SIGLEC6
Gene Alias	CD327, CD33L, CD33L1, CDw327, OBBP1, SIGLEC-6
Gene Description	sialic acid binding Ig-like lectin 6
Omim ID	604405
Gene Ontology	Hyperlink
Other Designations	CD33 antigen-like 1 CDw327 antigen OTTHUMP00000164940 OTTHUMP00000164941 OTTHUMP00000164942 Obesity-binding protein 1