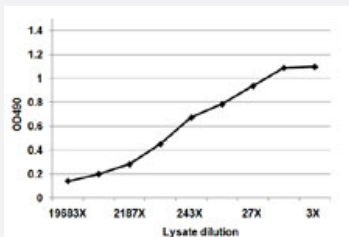


CD33 (Human) Matched Antibody Pair

Catalog # H00000945-AP61

Size 1 Set

Applications



Sandwich ELISA detection sensitivity ranging from approximately 19683x to 9x dilution of the CD33 293T overexpression lysate (non-denatured).

Specification

Product Description

This antibody pair set comes with a matched antibody pair to detect and quantify the protein level of human CD33.

Reactivity

Human

Quality Control Testing

Standard curve using CD33 293T overexpression lysate (non-denatured) as an analyte. Sandwich ELISA detection sensitivity ranging from approximately 19683x to 9x dilution of the CD33 293T overexpression lysate (non-denatured).

Supplied Product

Antibody pair set content:
 1. Capture antibody: mouse monoclonal anti-CD33, IgG2a Kappa (100 ug)
 2. Detection antibody: rabbit affinity purified polyclonal anti-CD33 (50 ug)
 *Reagents are sufficient for at least 3-5 x 96 well plates using recommended protocols.

Storage Instruction

Store reagents of the antibody pair set at -20°C or lower. Please aliquot to avoid repeated freeze thaw cycle. Reagents should be returned to -20°C storage immediately after use.

Applications

- ELISA Pair (Transfected lysate)

[Protocol Download](#)

Gene Info — CD33

Entrez GeneID	945
Gene Name	CD33
Gene Alias	FLJ00391, SIGLEC-3, SIGLEC3, p67
Gene Description	CD33 molecule
Omim ID	159590
Gene Ontology	Hyperlink
Other Designations	CD33 antigen CD33 antigen (gp67)

Pathway

- [Hematopoietic cell lineage](#)

Disease

- [Leukemia](#)
- [Neoplasm](#)
- [Tobacco Use Disorder](#)