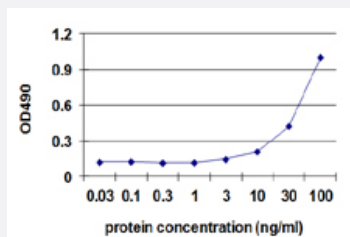


TNFSF8 (Human) Matched Antibody Pair

Catalog # H00000944-AP41

Size 1 Set

Applications



Sandwich ELISA detection sensitivity ranging from 1 ng/ml to 100 ng/ml.

Specification

Product Description	This antibody pair set comes with a matched antibody pair to detect and quantify the protein level of human TNFSF8.
Reactivity	Human
Interspecies Antigen Sequence	Mouse (75%)
Quality Control Testing	Standard curve using recombinant protein (H00000944-Q02) as an analyte. Sandwich ELISA detection sensitivity ranging from 1 ng/ml to 100 ng/ml.
Supplied Product	Antibody pair set content: 1. Capture antibody: mouse monoclonal anti-TNFSF8, IgG1 Kappa (100 ug) 2. Detection antibody: biotinylated mouse monoclonal anti-TNFSF8, IgG1 Kappa (50 ug) *Reagents are sufficient for at least 3-5 x 96 well plates using recommended protocols.
Storage Instruction	Store reagents of the antibody pair set at -20°C or lower. Please aliquot to avoid repeated freeze thaw cycle. Reagents should be returned to -20°C storage immediately after use.

Applications

- ELISA Pair (Recombinant protein)

[Protocol Download](#)

Gene Info — TNFSF8

Entrez GeneID [944](#)

Gene Name TNFSF8

Gene Alias CD153, CD30L, CD30LG, MGC138144

Gene Description tumor necrosis factor (ligand) superfamily, member 8

Omim ID [603875](#)

Gene Ontology [Hyperlink](#)

Gene Summary The protein encoded by this gene is a cytokine that belongs to the tumor necrosis factor (TNF) ligand family. This cytokine is a ligand for TNFRSF8/CD30, which is a cell surface antigen and a marker for Hodgkin lymphoma and related hematologic malignancies. The engagement of this cytokine expressed on B cell surface plays an inhibitory role in modulating Ig class switch. This cytokine was shown to enhance cell proliferation of some lymphoma cell lines, while to induce cell death and reduce cell proliferation of other lymphoma cell lines. The pleiotropic biologic activities of this cytokine on different CD30+ lymphoma cell lines may play a pathophysiologic role in Hodgkin's and some non-Hodgkin's lymphomas. [provided by RefSeq]

Other Designations CD153 antigen|CD30 antigen ligand|CD30 ligand|OTTHUMP00000022762

Pathway

- [Cytokine-cytokine receptor interaction](#)

Disease

- [Diabetes Mellitus](#)
- [Genetic Predisposition to Disease](#)
- [Hematologic Diseases](#)
- [Hodgkin Disease](#)
- [Kidney Failure](#)

- [Lymphoma](#)
- [Lymphoproliferative Disorders](#)
- [Multiple Myeloma](#)
- [Occupational Diseases](#)
- [Waldenstrom Macroglobulinemia](#)
- [Werner syndrome](#)