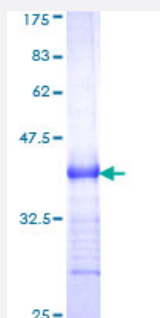


TNFRSF8 (Human) Recombinant Protein (Q01)

Catalog # H00000943-Q01

Size 25 ug, 10 ug

Applications



Specification

Product Description	Human TNFRSF8 partial ORF (NP_001234, 21 a.a. - 133 a.a.) recombinant protein with GST-tag at N-terminal.
Sequence	QDRPFEDTCHGNPSHYDKAVRRCCYRCPMGLFPTQQCPQRPTDCRKQCEPDYYLDEADRCT ACVTCSRDDLVEKTPCAWNSSRVCECRPGMFCSTSAVNSCARCFHVSVCPA
Host	Wheat Germ (in vitro)
Theoretical MW (kDa)	38.17
Interspecies Antigen Sequence	Mouse (63)
Preparation Method	in vitro wheat germ expression system
Purification	Glutathione Sepharose 4 Fast Flow
Quality Control Testing	12.5% SDS-PAGE Stained with Coomassie Blue.
Storage Buffer	50 mM Tris-HCl, 10 mM reduced Glutathione, pH=8.0 in the elution buffer.
Storage Instruction	Store at -80°C. Aliquot to avoid repeated freezing and thawing.
Note	Best use within three months from the date of receipt of this protein.

Applications

- Enzyme-linked Immunoabsorbent Assay
- Western Blot (Recombinant protein)
- Antibody Production
- Protein Array

Gene Info — TNFRSF8

Entrez GeneID [943](#)

GeneBank Accession# [NM_001243](#)

Protein Accession# [NP_001234](#)

Gene Name TNFRSF8

Gene Alias CD30, D1S166E, KI-1

Gene Description tumor necrosis factor receptor superfamily, member 8

Omim ID [153243](#)

Gene Ontology [Hyperlink](#)

Gene Summary The protein encoded by this gene is a member of the TNF-receptor superfamily. This receptor is expressed by activated, but not by resting, T and B cells. TRAF2 and TRAF5 can interact with this receptor, and mediate the signal transduction that leads to the activation of NF-kappaB. This receptor is a positive regulator of apoptosis, and also has been shown to limit the proliferative potential of autoreactive CD8 effector T cells and protect the body against autoimmunity. Two alternatively spliced transcript variants of this gene encoding distinct isoforms have been reported. [provided by RefSeq]

Other Designations CD30 antigen|CD30L receptor|Ki-1 antigen|OTTHUMP00000001783|cytokine receptor CD30|lymphocyte activation antigen CD30

Pathway

- [Cytokine-cytokine receptor interaction](#)

Disease

- [Asthma](#)
- [Diabetes Mellitus](#)
- [Genetic Predisposition to Disease](#)
- [Hematologic Diseases](#)
- [HIV Infections](#)
- [Kidney Failure](#)
- [Multiple Myeloma](#)
- [Occupational Diseases](#)
- [Tobacco Use Disorder](#)