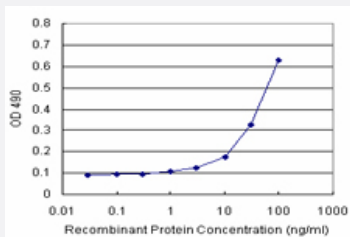


CD27 (Human) Matched Antibody Pair

Catalog # H00000939-AP21

Size 1 Set

Applications



Sandwich ELISA detection sensitivity ranging from 10 ng/ml to 100 ng/ml.

Specification

Product Description	This antibody pair set comes with a matched antibody pair to detect and quantify the protein level of human CD27.
Reactivity	Human
Quality Control Testing	Standard curve using recombinant protein (H00000939-P01) as an analyte. Sandwich ELISA detection sensitivity ranging from 10 ng/ml to 100 ng/ml.
Supplied Product	Antibody pair set content: 1. Capture antibody: rabbit MaxPab® affinity purified polyclonal anti-CD27 (100 ug) 2. Detection antibody: mouse purified polyclonal anti-CD27 (20 ug) *Reagents are sufficient for at least 1-2 x 96 well plates using recommended protocols.
Storage Instruction	Store reagents of the antibody pair set at -20°C or lower. Please aliquot to avoid repeated freeze thaw cycle. Reagents should be returned to -20°C storage immediately after use.

Applications

- ELISA Pair (Recombinant protein)

[Protocol Download](#)

Gene Info — CD27

Entrez GeneID	939
Gene Name	CD27
Gene Alias	MGC20393, S152, T14, TNFRSF7, Tp55
Gene Description	CD27 molecule
Omim ID	186711
Gene Ontology	Hyperlink
Gene Summary	The protein encoded by this gene is a member of the TNF-receptor superfamily. This receptor is required for generation and long-term maintenance of T cell immunity. It binds to ligand CD70, and plays a key role in regulating B-cell activation and immunoglobulin synthesis. This receptor transduces signals that lead to the activation of NF-kappaB and MAPK8/JNK. Adaptor proteins TRAF2 and TRAF5 have been shown to mediate the signaling process of this receptor. CD27-binding protein (SIVA), a proapoptotic protein, can bind to this receptor and is thought to play an important role in the apoptosis induced by this receptor. [provided by RefSeq]
Other Designations	CD27 antigen CD27L receptor T cell activation antigen CD27 T cell activation antigen S152 tumor necrosis factor receptor superfamily, member 7

Pathway

- [Cytokine-cytokine receptor interaction](#)

Disease

- [Asthma](#)
- [Bronchial Hyperreactivity](#)
- [Genetic Predisposition to Disease](#)
- [Hematologic Diseases](#)
- [Kidney Failure](#)
- [Multiple Myeloma](#)
- [Occupational Diseases](#)