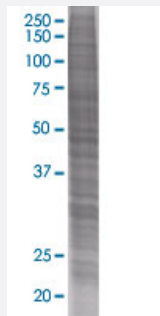


MS4A3 293T Cell Transient Overexpression Lysate(Denatured)

Catalog # H00000932-T01

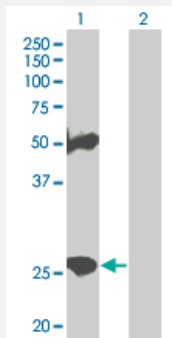
Size 100 uL

Applications



SDS-PAGE Gel

MS4A3 transfected lysate



Western Blot

Lane 1: MS4A3 transfected lysate (23.65 KDa).

Lane 2: Non-transfected lysate.

Specification

| | |
|-------------------------------|------------------------|
| Transfected Cell Line | 293T |
| Plasmid | pCMV-MS4A3 full-length |
| Host | Human |
| Theoretical MW (kDa) | 23.65 |
| Interspecies Antigen Sequence | Mouse (64); Rat (60) |

Quality Control Testing

Transient overexpression cell lysate was tested with Anti-MS4A3 antibody ([H00000932-B01](#)) by Western Blots.
SDS-PAGE Gel
MS4A3 transfected lysate
Western Blot
Lane 1: MS4A3 transfected lysate (23.65 KDa).
Lane 2: Non-transfected lysate.

Storage Buffer

1X Sample Buffer (50 mM Tris-HCl, 2% SDS, 10% glycerol, 300 mM 2-mercaptoethanol, 0.01% Bromophenol blue)

Storage Instruction

Store at -80°C. Aliquot to avoid repeated freezing and thawing.

Applications

- Western Blot

Gene Info — MS4A3

Entrez GeneID[932](#)**GeneBank Accession#**[BC008487](#)**Protein Accession#**[AAH08487](#)**Gene Name**

MS4A3

Gene Alias

CD20L, HTM4

Gene Description

membrane-spanning 4-domains, subfamily A, member 3 (hematopoietic cell-specific)

Omim ID[606498](#)**Gene Ontology**[Hyperlink](#)**Gene Summary**

This gene encodes a member of the membrane-spanning 4A gene family. Members of this protein family are characterized by common structural features and similar intron/exon splice boundaries and display unique expression patterns among hematopoietic cells and nonlymphoid tissues. This family member likely plays a role in signal transduction and may function as a subunit associated with receptor complexes. The gene encoding this protein is localized to 11q12, among a cluster of related family members. Alternative splicing may result in multiple transcript variants; however, not all variants have been fully described. [provided by RefSeq]

Other Designations

CD20 antigen homolog|CD20 antigen-like|IgE receptor beta chain|IgE receptor beta subunit|hematopoietic cell 4 transmembrane protein|membrane-spanning 4-domains subfamily A member 3|membrane-spanning 4-domains, subfamily A, member 3

Disease

- [Genetic Predisposition to Disease](#)
- [Narcolepsy](#)