

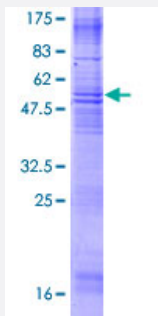
Full-Length

MS4A3 (Human) Recombinant Protein (P02)

Catalog # H00000932-P02

Size 25 ug, 10 ug

Applications



Specification

Product Description	Human MS4A3 full-length ORF (NP_006129.4, 1 a.a. - 214 a.a.) recombinant protein with GST-tag at N-terminal.
Sequence	MASHEVDNAELGSASAHGTPGSEAGPEELNTSVYQPIDGSPDYQKAKLQVLGAIQILNAAMILALGVFLGSLQYPYHFQKHFFFFFTFYTGYPWIGAVFFCSSLVSVAGIKPTRTWIQNSFGMNIASATIALVGTAFLSLNIAVNIQSLRSCHSSSESPDLCNYMGSISNGMVLLLLILTLELCVTISTIAMWCNANCCNSREEISSPPNSV
Host	Wheat Germ (in vitro)
Theoretical MW (kDa)	49.3
Interspecies Antigen Sequence	Mouse (64); Rat (60)
Preparation Method	in vitro wheat germ expression system
Purification	Glutathione Sepharose 4 Fast Flow
Quality Control Testing	12.5% SDS-PAGE Stained with Coomassie Blue.
Storage Buffer	50 mM Tris-HCl, 10 mM reduced Glutathione, pH=8.0 in the elution buffer.
Storage Instruction	Store at -80°C. Aliquot to avoid repeated freezing and thawing.

Note

Best use within three months from the date of receipt of this protein.

Applications

- Enzyme-linked Immunoabsorbent Assay
- Western Blot (Recombinant protein)
- Antibody Production
- Protein Array

Gene Info — MS4A3

Entrez GeneID [932](#)

GeneBank Accession# [NM_006138.4](#)

Protein Accession# [NP_006129.4](#)

Gene Name MS4A3

Gene Alias CD20L, HTM4

Gene Description membrane-spanning 4-domains, subfamily A, member 3 (hematopoietic cell-specific)

Omim ID [606498](#)

Gene Ontology [Hyperlink](#)

Gene Summary This gene encodes a member of the membrane-spanning 4A gene family. Members of this protein family are characterized by common structural features and similar intron/exon splice boundaries and display unique expression patterns among hematopoietic cells and nonlymphoid tissues. This family member likely plays a role in signal transduction and may function as a subunit associated with receptor complexes. The gene encoding this protein is localized to 11q12, among a cluster of related family members. Alternative splicing may result in multiple transcript variants; however, not all variants have been fully described. [provided by RefSeq]

Other Designations CD20 antigen homolog|CD20 antigen-like|IgE receptor beta chain|IgE receptor beta subunit|hematopoietic cell 4 transmembrane protein|membrane-spanning 4-domains subfamily A member 3|membrane-spanning 4-domains, subfamily A, member 3

Disease

- [Genetic Predisposition to Disease](#)
- [Narcolepsy](#)