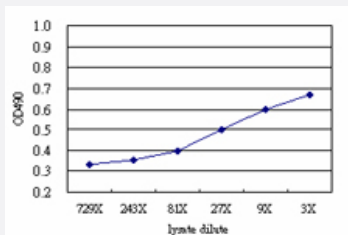


# MS4A1 (Human) Matched Antibody Pair

Catalog # H00000931-AP51

Size 1 Set

## Applications



Sandwich ELISA detection sensitivity ranging from approximately 27x to 3x dilution of the MS4A1 293T overexpression lysate (non-denatured).

## Specification

<b>Product Description</b>	This antibody pair set comes with a matched antibody pair to detect and quantify the protein level of human MS4A1.
<b>Reactivity</b>	Human
<b>Quality Control Testing</b>	Standard curve using MS4A1 293T overexpression lysate (non-denatured) as an analyte. Sandwich ELISA detection sensitivity ranging from approximately 27x to 3x dilution of the MS4A1 293T overexpression lysate (non-denatured).
<b>Supplied Product</b>	Antibody pair set content: 1. Capture antibody: mouse monoclonal anti-MS4A1 (100 ug) 2. Detection antibody: rabbit purified polyclonal anti-MS4A1 (50 ug) *Reagents are sufficient for at least 3-5 x 96 well plates using recommended protocols.
<b>Storage Instruction</b>	Store reagents of the antibody pair set at -20°C or lower. Please aliquot to avoid repeated freeze thaw cycle. Reagents should be returned to -20°C storage immediately after use.

## Applications

- ELISA Pair (Transfected lysate)

[Protocol Download](#)

## Gene Info — MS4A1

**Entrez GeneID** [931](#)

**Gene Name** MS4A1

**Gene Alias** B1, Bp35, CD20, LEU-16, MGC3969, MS4A2, S7

**Gene Description** membrane-spanning 4-domains, subfamily A, member 1

**Omim ID** [112210](#)

**Gene Ontology** [Hyperlink](#)

**Gene Summary** This gene encodes a member of the membrane-spanning 4A gene family. Members of this nascent protein family are characterized by common structural features and similar intron/exon splice boundaries and display unique expression patterns among hematopoietic cells and nonlymphoid tissues. This gene encodes a B-lymphocyte surface molecule which plays a role in the development and differentiation of B-cells into plasma cells. This family member is localized to 11q12, among a cluster of family members. Alternative splicing of this gene results in two transcript variants which encode the same protein. [provided by RefSeq]

**Other Designations** B-lymphocyte cell-surface antigen B1|CD20 antigen|CD20 receptor

## Pathway

- [Hematopoietic cell lineage](#)

## Disease

- [Breast cancer](#)
- [Breast Neoplasms](#)
- [Genetic Predisposition to Disease](#)
- [Lymphoma](#)
- [Neoplasm Recurrence](#)
- [Ovarian cancer](#)