

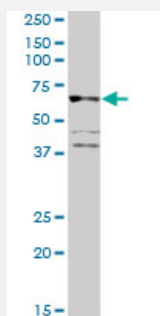
MaxPab®

CD19 purified MaxPab rabbit polyclonal antibody (D01P)

Catalog # H00000930-D01P

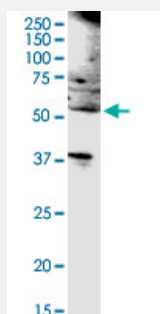
Size 100 ug

Applications



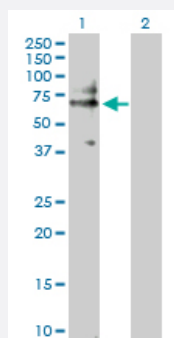
Western Blot (Tissue lysate)

CD19 MaxPab rabbit polyclonal antibody. Western Blot analysis of CD19 expression in mouse kidney.



Western Blot (Cell lysate)

CD19 MaxPab rabbit polyclonal antibody. Western Blot analysis of CD19 expression in IMR-32.

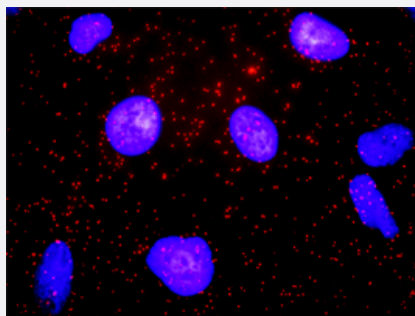


Western Blot (Transfected lysate)

Western Blot analysis of CD19 expression in transfected 293T cell line ([H00000930-T01](#)) by CD19 MaxPab polyclonal antibody.

Lane 1: CD19 transfected lysate(61.10 KDa).

Lane 2: Non-transfected lysate.



In situ Proximity Ligation Assay (Cell)

Proximity Ligation Analysis of protein-protein interactions between CD19 and CD82. HeLa cells were stained with anti-CD19 rabbit purified polyclonal 1:1200 and anti-CD82 mouse monoclonal antibody 1:50. Each red dot represents the detection of protein-protein interaction complex, and nuclei were counterstained with DAPI (blue).

Specification

Product Description	Rabbit polyclonal antibody raised against a full-length human CD19 protein.
Immunogen	CD19 (NP_001761.3, 1 a.a. ~ 556 a.a) full-length human protein.
Sequence	MPPPRLLFFLLFLTPMEVRPEEPLVVKVEEGDNAVLQCLKGTSDGPTQQLTWSRESPLKPFLKL SLGLPGLGIHMRPLAWLFIFNVSQQMGGFYLCQPGPPSEKAWQPGWTVNVEGSGELFRWNVS DLGGLGCGLKNRSSEGPSSPSGKLMSPKLYWAKDRPEIWEGEPPCLPPRDSL NQSLSQDLTM APGSTLWLSCGVPPDSVSRGPLSWTHVHPKGPKSLLSLELKDDRPARDMWVMETGLLLPRATA QDAGKYYCHRGNL TMSFHLEITARPVLWHWLLRTGGWKVSAVTLAYLIFCLCSLVGILHLQRALVL RRKRKRMTDPTRRFFKVTPPPGSGPQNQYGNVLSLPTPTSGLGRAQRWAAGLGGTAPSYGNPS SDVQADGALGSRSPPGVGPEEEEEEGEGYEEP DSEEDSEFYENDSNLGQDQLSQDGSYGYPED EPLGPEDEDSFSNAESYENEDEELTQPVARTMDFLSPHGS AWDP SREATSLGSQSYEDMRGILY AAPQLRSIRGQPGPNHEEDADSYENMDNPDGPDPAWGGGGRMGTWSTR
Host	Rabbit
Reactivity	Human, Mouse
Interspecies Antigen Sequence	Mouse (66); Rat (65)
Quality Control Testing	Antibody reactive against mammalian transfected lysate.
Storage Buffer	In 1x PBS, pH 7.4
Storage Instruction	Store at -20°C or lower. Aliquot to avoid repeated freezing and thawing.

Applications

- Western Blot (Tissue lysate)

CD19 MaxPab rabbit polyclonal antibody. Western Blot analysis of CD19 expression in mouse kidney.

[Protocol Download](#)

- Western Blot (Cell lysate)

CD19 MaxPab rabbit polyclonal antibody. Western Blot analysis of CD19 expression in IMR-32.

[Protocol Download](#)

- Western Blot (Transfected lysate)

Western Blot analysis of CD19 expression in transfected 293T cell line ([H00000930-T01](#)) by CD19 MaxPab polyclonal antibody.

Lane 1: CD19 transfected lysate(61.10 KDa).

Lane 2: Non-transfected lysate.

[Protocol Download](#)

- In situ* Proximity Ligation Assay (Cell)

Proximity Ligation Analysis of protein-protein interactions between CD19 and CD82. HeLa cells were stained with anti-CD19 rabbit purified polyclonal 1:1200 and anti-CD82 mouse monoclonal antibody 1:50. Each red dot represents the detection of protein-protein interaction complex, and nuclei were counterstained with DAPI (blue).

Gene Info — CD19

Entrez GeneID

[930](#)

GeneBank Accession#

[NM_001770](#)

Protein Accession#

[NP_001761.3](#)

Gene Name

CD19

Gene Alias

B4, MGC12802

Gene Description

CD19 molecule

Omim ID

[107265](#)

Gene Ontology

[Hyperlink](#)

Gene Summary

Lymphocytes proliferate and differentiate in response to various concentrations of different antigens. The ability of the B cell to respond in a specific, yet sensitive manner to the various antigens is achieved with the use of low-affinity antigen receptors. This gene encodes a cell surface molecule which assembles with the antigen receptor of B lymphocytes in order to decrease the threshold for antigen receptor-dependent stimulation. [provided by RefSeq]

Other Designations

B-lymphocyte antigen CD19|CD19 antigen

Pathway

- [B cell receptor signaling pathway](#)
- [Hematopoietic cell lineage](#)
- [Primary immunodeficiency](#)

Disease

- [Arthritis](#)
- [Crohn Disease](#)
- [Genetic Predisposition to Disease](#)
- [Lupus Erythematosus](#)
- [Pemphigus](#)
- [Scleroderma](#)