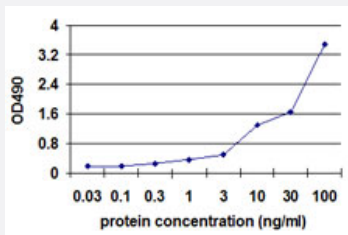


# CD19 (Human) Matched Antibody Pair

Catalog # H00000930-AP42

Size 1 Set

## Applications



Sandwich ELISA detection sensitivity ranging from 0.1 ng/ml to 100 ng/ml.

## Specification

<b>Product Description</b>	This antibody pair set comes with a matched antibody pair to detect and quantify the protein level of human CD19.
<b>Reactivity</b>	Human
<b>Interspecies Antigen Sequence</b>	Mouse (58%); Rat (58%)
<b>Quality Control Testing</b>	Standard curve using recombinant protein ( H00000930-Q01 ) as an analyte. Sandwich ELISA detection sensitivity ranging from 0.1 ng/ml to 100 ng/ml.
<b>Supplied Product</b>	Antibody pair set content: 1. Capture antibody: mouse monoclonal anti-CD19, IgG1 Kappa (100 ug) 2. Detection antibody: biotinylated mouse monoclonal anti-CD19, IgG2a Kappa (50 ug) *Reagents are sufficient for at least 3-5 x 96 well plates using recommended protocols.
<b>Storage Instruction</b>	Store reagents of the antibody pair set at -20°C or lower. Please aliquot to avoid repeated freeze thaw cycle. Reagents should be returned to -20°C storage immediately after use.

## Applications

- ELISA Pair (Recombinant protein)

[Protocol Download](#)

## Gene Info — CD19

**Entrez GeneID** [930](#)

**Gene Name** CD19

**Gene Alias** B4, MGC12802

**Gene Description** CD19 molecule

**Omim ID** [107265](#)

**Gene Ontology** [Hyperlink](#)

**Gene Summary** Lymphocytes proliferate and differentiate in response to various concentrations of different antigens. The ability of the B cell to respond in a specific, yet sensitive manner to the various antigens is achieved with the use of low-affinity antigen receptors. This gene encodes a cell surface molecule which assembles with the antigen receptor of B lymphocytes in order to decrease the threshold for antigen receptor-dependent stimulation. [provided by RefSeq]

**Other Designations** B-lymphocyte antigen CD19|CD19 antigen

## Pathway

- [B cell receptor signaling pathway](#)
- [Hematopoietic cell lineage](#)
- [Primary immunodeficiency](#)

## Disease

- [Arthritis](#)
- [Crohn Disease](#)
- [Genetic Predisposition to Disease](#)
- [Lupus Erythematosus](#)

- [Pemphigus](#)
- [Scleroderma](#)