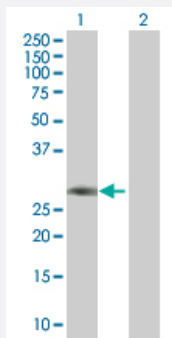


# CD8B 293T Cell Transient Overexpression Lysate(Denatured)

Catalog # H00000926-T01

Size 100 uL

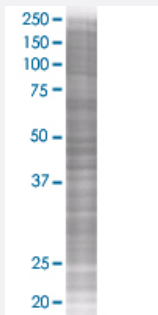
## Applications



### Western Blot

Lane 1: CD8B transfected lysate ( 27.2 KDa)

Lane 2: Non-transfected lysate.



### SDS-PAGE Gel

CD8B transfected lysate.

## Specification

**Transfected Cell Line** 293T

**Plasmid** pCMV-CD8B full-length

**Host** Human

**Theoretical MW (kDa)** 26.84

**Quality Control Testing** Transient overexpression cell lysate was tested with Anti-CD8B antibody ([H00000926-B01](#)) by Western Blots.  
Western Blot  
Lane 1: CD8B transfected lysate ( 27.2 KDa)  
Lane 2: Non-transfected lysate.  
SDS-PAGE Gel  
CD8B transfected lysate.

<b>Storage Buffer</b>	1X Sample Buffer (50 mM Tris-HCl, 2% SDS, 10% glycerol, 300 mM 2-mercaptoethanol, 0.01% Bromophenol blue)
<b>Storage Instruction</b>	Store at -80°C. Aliquot to avoid repeated freezing and thawing.

## Applications

- Western Blot

## Gene Info — CD8B

**Entrez GeneID** [926](#)

**GeneBank Accession#** [NM\\_172213](#)

**Protein Accession#** [NP\\_757362](#)

**Gene Name** CD8B

**Gene Alias** CD8B1, LYT3, Leu2, Ly3, MGC119115

**Gene Description** CD8b molecule

**Omim ID** [186730](#)

**Gene Ontology** [Hyperlink](#)

**Gene Summary** The CD8 antigen is a cell surface glycoprotein found on most cytotoxic T lymphocytes that mediates efficient cell-cell interactions within the immune system. The CD8 antigen, acting as a coreceptor, and the T-cell receptor on the T lymphocyte recognize antigen displayed by an antigen presenting cell (APC) in the context of class I MHC molecules. The functional coreceptor is either a homodimer composed of two alpha chains, or a heterodimer composed of one alpha and one beta chain. Both alpha and beta chains share significant homology to immunoglobulin variable light chains. This gene encodes the CD8 beta chain isoforms. Multiple alternatively spliced transcript variants encoding distinct membrane associated or secreted isoforms have been described. A pseudogene, also located on chromosome 2, has been identified. [provided by RefSeq]

**Other Designations** CD8 antigen, beta polypeptide (p37)|CD8 antigen, beta polypeptide 1 (p37)|CD8b antigen|OTTH UMP00000160761|T lymphocyte surface glycoprotein beta chain|T-cell surface glycoprotein CD8 beta chain

## Pathway

- [Antigen processing and presentation](#)

- [Cell adhesion molecules \(CAMs\)](#)
- [Hematopoietic cell lineage](#)
- [Primary immunodeficiency](#)
- [T cell receptor signaling pathway](#)

## Disease

- [Tobacco Use Disorder](#)