

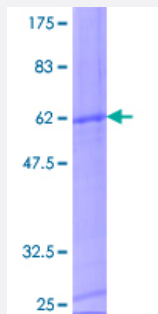
Full-Length

CD8B1 (Human) Recombinant Protein (P01)

Catalog # H00000926-P01

Size 10 ug, 25 ug

Applications



Specification

Product Description

Human CD8B1 full-length ORF (NP_757362.1, 1 a.a. - 243 a.a.) recombinant protein with GST-tag at N-terminal.

Sequence

MRPRLWLLAAQLTVLHGNSVLQQTPAYIKVQTNKMVMLSCEAKISLSNMRIWLRQRQAPSSDS
HHEFLALWDSAKGTIHGEEVEQEKIIVFRDASRFILNLTSPKPEDSGMYFCMVGSPELTFGKGTQL
SVVDLPTTAQPTKKSTLKKRVCRLRPETQKGPLCSPITLGLLVAGVLVLLVSLGVAIHLCCRRR
RARLRFMKQPQGEISGTFVPQCLHGYYSNTTTSQKLLNPWILKT

Host

Wheat Germ (in vitro)

Theoretical MW (kDa)

53.6

Preparation Method

[in vitro wheat germ expression system](#)

Purification

Glutathione Sepharose 4 Fast Flow

Quality Control Testing

12.5% SDS-PAGE Stained with Coomassie Blue.

Storage Buffer

50 mM Tris-HCl, 10 mM reduced Glutathione, pH=8.0 in the elution buffer.

Storage Instruction

Store at -80°C. Aliquot to avoid repeated freezing and thawing.

Note

Best use within three months from the date of receipt of this protein.

Applications

- Enzyme-linked Immunoabsorbent Assay
- Western Blot (Recombinant protein)
- Antibody Production
- Protein Array

Gene Info — CD8B

Entrez GeneID [926](#)

GeneBank Accession# [NM_172213.2](#)

Protein Accession# [NP_757362.1](#)

Gene Name CD8B

Gene Alias CD8B1, LYT3, Leu2, Ly3, MGC119115

Gene Description CD8b molecule

Omim ID [186730](#)

Gene Ontology [Hyperlink](#)

Gene Summary

The CD8 antigen is a cell surface glycoprotein found on most cytotoxic T lymphocytes that mediates efficient cell-cell interactions within the immune system. The CD8 antigen, acting as a coreceptor, and the T-cell receptor on the T lymphocyte recognize antigen displayed by an antigen presenting cell (APC) in the context of class I MHC molecules. The functional coreceptor is either a homodimer composed of two alpha chains, or a heterodimer composed of one alpha and one beta chain. Both alpha and beta chains share significant homology to immunoglobulin variable light chains. This gene encodes the CD8 beta chain isoforms. Multiple alternatively spliced transcript variants encoding distinct membrane associated or secreted isoforms have been described. A pseudogene, also located on chromosome 2, has been identified. [provided by RefSeq]

Other Designations

CD8 antigen, beta polypeptide (p37)|CD8 antigen, beta polypeptide 1 (p37)|CD8b antigen|OTTHUMP00000160761|T lymphocyte surface glycoprotein beta chain|T-cell surface glycoprotein CD8 beta chain

Pathway

- [Antigen processing and presentation](#)
- [Cell adhesion molecules \(CAMs\)](#)
- [Hematopoietic cell lineage](#)
- [Primary immunodeficiency](#)
- [T cell receptor signaling pathway](#)

Disease

- [Tobacco Use Disorder](#)