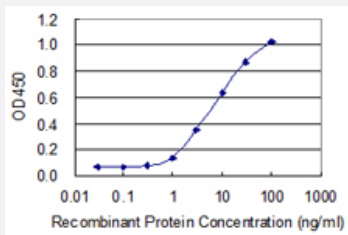


CD8B1 monoclonal antibody (M07), clone 4C8

Catalog # H00000926-M07

Size 100 ug

Applications



Sandwich ELISA (Recombinant protein)

Detection limit for recombinant GST tagged CD8B is 0.3 ng/ml as a capture antibody.

Specification

| | |
|--------------------------------|---|
| Product Description | Mouse monoclonal antibody raised against a partial recombinant CD8B1. |
| Immunogen | CD8B1 (NP_004922, 23 a.a. ~ 131 a.a) partial recombinant protein with GST tag. MW of the GST tag alone is 26 KDa. |
| Sequence | QQTPAYIKVQTNKMVMLSCEAKISLSNMRIYWLRRQAPSSDSHHEFLALWDSAKGTIHGEEVEQ EKIAVFRDASRFILNLTSVKPEDSGMYFCMVGSPELTFGKGTQ |
| Host | Mouse |
| Reactivity | Human |
| Isotype | IgG2a Kappa |
| Quality Control Testing | Antibody Reactive Against Recombinant Protein. |
| Storage Buffer | In 1x PBS, pH 7.4 |
| Storage Instruction | Store at -20°C or lower. Aliquot to avoid repeated freezing and thawing. |

Applications

- Sandwich ELISA (Recombinant protein)

Detection limit for recombinant GST tagged CD8B is 0.3 ng/ml as a capture antibody.

[Protocol Download](#)

- ELISA

Gene Info — CD8B

Entrez GeneID [926](#)

GeneBank Accession# [NM_004931](#)

Protein Accession# [NP_004922](#)

Gene Name CD8B

Gene Alias CD8B1, LYT3, Leu2, Ly3, MGC119115

Gene Description CD8b molecule

Omim ID [186730](#)

Gene Ontology [Hyperlink](#)

Gene Summary

The CD8 antigen is a cell surface glycoprotein found on most cytotoxic T lymphocytes that mediates efficient cell-cell interactions within the immune system. The CD8 antigen, acting as a coreceptor, and the T-cell receptor on the T lymphocyte recognize antigen displayed by an antigen presenting cell (APC) in the context of class I MHC molecules. The functional coreceptor is either a homodimer composed of two alpha chains, or a heterodimer composed of one alpha and one beta chain. Both alpha and beta chains share significant homology to immunoglobulin variable light chains. This gene encodes the CD8 beta chain isoforms. Multiple alternatively spliced transcript variants encoding distinct membrane associated or secreted isoforms have been described. A pseudogene, also located on chromosome 2, has been identified. [provided by RefSeq]

Other Designations

CD8 antigen, beta polypeptide (p37)|CD8 antigen, beta polypeptide 1 (p37)|CD8b antigen|OTTH UMP00000160761|T lymphocyte surface glycoprotein beta chain|T-cell surface glycoprotein CD8 beta chain

Pathway

- [Antigen processing and presentation](#)
- [Cell adhesion molecules \(CAMs\)](#)
- [Hematopoietic cell lineage](#)
- [Primary immunodeficiency](#)
- [T cell receptor signaling pathway](#)

Disease

- [Tobacco Use Disorder](#)