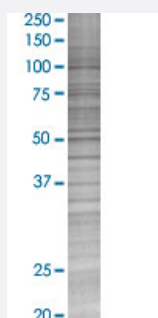


CD8A 293T Cell Transient Overexpression Lysate(Denatured)

Catalog # H00000925-T02

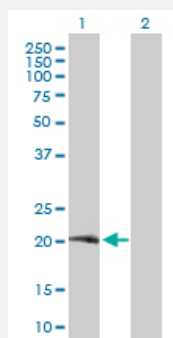
Size 100 uL

Applications



SDS-PAGE Gel

CD8A transfected lysate.



Western Blot

Lane 1: CD8A transfected lysate (25.70 KDa)

Lane 2: Non-transfected lysate.

Specification

Transfected Cell Line 293T

Plasmid pCMV-CD8A full-length

Host Human

Theoretical MW (kDa) 25.7

Quality Control Testing

Transient overexpression cell lysate was tested with Anti-CD8A antibody ([H00000925-D01P](#)) by Western Blots.

SDS-PAGE Gel

CD8A transfected lysate.

Western Blot

Lane 1: CD8A transfected lysate (25.70 KDa)

Lane 2: Non-transfected lysate.

Storage Buffer	1X Sample Buffer (50 mM Tris-HCl, 2% SDS, 10% glycerol, 300 mM 2-mercaptoethanol, 0.01% Bromophenol blue)
Storage Instruction	Store at -80°C. Aliquot to avoid repeated freezing and thawing.

Applications

- Western Blot

Gene Info — CD8A

Entrez GeneID	925
GeneBank Accession#	BC025715
Protein Accession#	AAH25715.1
Gene Name	CD8A
Gene Alias	CD8, Leu2, MAL, p32
Gene Description	CD8a molecule
Omim ID	186910 608957
Gene Ontology	Hyperlink

Gene Summary	The CD8 antigen is a cell surface glycoprotein found on most cytotoxic T lymphocytes that mediates efficient cell-cell interactions within the immune system. The CD8 antigen acts as a coreceptor with the T-cell receptor on the T lymphocyte to recognize antigens displayed by an antigen presenting cell (APC) in the context of class I MHC molecules. The coreceptor functions as either a homodimer composed of two alpha chains, or as a heterodimer composed of one alpha and one beta chain. Both alpha and beta chains share significant homology to immunoglobulin variable light chains. This gene encodes the CD8 alpha chain isoforms. Multiple transcript variants encoding different isoforms have been found for this gene. [provided by RefSeq]
---------------------	---------------------------------------------------------------------------------------------------------------------------------------------------------------------------------------------------------------------------------------------------------------------------------------------------------------------------------------------------------------------------------------------------------------------------------------------------------------------------------------------------------------------------------------------------------------------------------------------------------------------------------------------------------------------------------------------------------------------------------------------------------------------

Other Designations	CD8 antigen alpha polypeptide CD8 antigen, alpha polypeptide (p32) Leu2 T-lymphocyte antigen OKT8 T-cell antigen T cell co-receptor T-cell antigen Leu2 T-cell surface glycoprotein CD8 alpha chain T-lymphocyte differentiation antigen T8/Leu-2 T8 T-cell ant
---------------------------	-----------------------------------------------------------------------------------------------------------------------------------------------------------------------------------------------------------------------------------------------------------------

Pathway

- [Antigen processing and presentation](#)

- [Cell adhesion molecules \(CAMs\)](#)
- [Hematopoietic cell lineage](#)
- [Primary immunodeficiency](#)
- [T cell receptor signaling pathway](#)