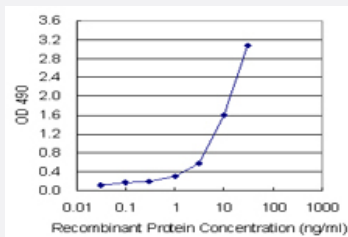


## CD3E (Human) Matched Antibody Pair

Catalog # H00000916-AP41

Size 1 Set

### Applications



Sandwich ELISA detection sensitivity ranging from 1 ng/ml to 100 ng/ml.

### Specification

<b>Product Description</b>	This antibody pair set comes with a matched antibody pair to detect and quantify the protein level of human CD3E.
<b>Reactivity</b>	Human
<b>Interspecies Antigen Sequence</b>	Mouse (58%); Rat (59%)
<b>Quality Control Testing</b>	Standard curve using recombinant protein ( H00000916-P01 ) as an analyte. Sandwich ELISA detection sensitivity ranging from 1 ng/ml to 100 ng/ml.
<b>Supplied Product</b>	Antibody pair set content: 1. Capture antibody: mouse monoclonal anti-CD3E (100 ug) 2. Detection antibody: biotinylated mouse monoclonal anti-CD3E, IgG2a Kappa (50 ug) *Reagents are sufficient for at least 3-5 x 96 well plates using recommended protocols.
<b>Storage Instruction</b>	Store reagents of the antibody pair set at -20°C or lower. Please aliquot to avoid repeated freeze thaw cycle. Reagents should be returned to -20°C storage immediately after use.

### Applications

- ELISA Pair (Recombinant protein)

[Protocol Download](#)

## Gene Info — CD3E

Entrez GeneID [916](#)

Gene Name CD3E

Gene Alias FLJ18683, T3E, TCRE

Gene Description CD3e molecule, epsilon (CD3-TCR complex)

Omim ID [186830](#)

Gene Ontology [Hyperlink](#)

**Gene Summary** The protein encoded by this gene is the CD3-epsilon polypeptide, which together with CD3-gamma, -delta and -zeta, and the T-cell receptor alpha/beta and gamma/delta heterodimers, forms the T-cell receptor-CD3 complex. This complex plays an important role in coupling antigen recognition to several intracellular signal-transduction pathways. The genes encoding the epsilon, gamma and delta polypeptides are located in the same cluster on chromosome 11. The epsilon polypeptide plays an essential role in T-cell development. Defects in this gene cause immunodeficiency. This gene has also been linked to a susceptibility to type I diabetes in women. [provided by RefSeq]

**Other Designations** CD3-epsilon|CD3E antigen, epsilon polypeptide|CD3e antigen, epsilon polypeptide (TiT3 complex)|T-cell antigen receptor complex, epsilon subunit of T3|T-cell surface antigen T3/Leu-4 epsilon chain|T-cell surface glycoprotein CD3 epsilon chain

## Pathway

- [Hematopoietic cell lineage](#)
- [Primary immunodeficiency](#)
- [T cell receptor signaling pathway](#)

## Disease

- [Asthma](#)
- [Cardiovascular Diseases](#)

- [Celiac Disease](#)
- [Depressive Disorder](#)
- [Diabetes Mellitus](#)
- [Edema](#)
- [Genetic Predisposition to Disease](#)
- [Inflammation](#)