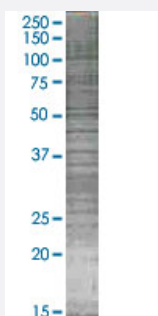


CD3D 293T Cell Transient Overexpression Lysate(Denatured)

Catalog # H00000915-T02

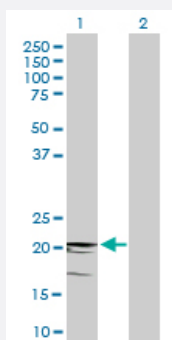
Size 100 uL

Applications



SDS-PAGE Gel

CD3D transfected lysate.



Western Blot

Lane 1: CD3D transfected lysate (18.9 KDa)

Lane 2: Non-transfected lysate.

Specification

Transfected Cell Line 293T

Plasmid pCMV-CD3D full-length

Host Human

Theoretical MW (kDa) 18.9

Quality Control Testing Transient overexpression cell lysate was tested with Anti-CD3D Purified antibody ([H00000915-B01](#)) by Western Blots.
SDS-PAGE Gel
CD3D transfected lysate.
Western Blot
Lane 1: CD3D transfected lysate (18.9 KDa)
Lane 2: Non-transfected lysate.

Storage Buffer

1X Sample Buffer (50 mM Tris-HCl, 2% SDS, 10% glycerol, 300 mM 2-mercaptoethanol, 0.01% Bromophenol blue)

Storage Instruction

Store at -80°C. Aliquot to avoid repeated freezing and thawing.

Applications

- Western Blot

Gene Info — CD3D

Entrez GeneID[915](#)**GeneBank Accession#**[NM_000732](#)**Protein Accession#**[NP_000723.1](#)**Gene Name**

CD3D

Gene Alias

CD3-DELTA, T3D

Gene Description

CD3d molecule, delta (CD3-TCR complex)

Omim ID[186790 600802](#)**Gene Ontology**[Hyperlink](#)**Gene Summary**

The protein encoded by this gene is part of the T-cell receptor/CD3 complex (TCR/CD3 complex) and is involved in T-cell development and signal transduction. The encoded membrane protein represents the delta subunit of the CD3 complex, and along with four other CD3 subunits, binds either TCR alpha/beta or TCR gamma/delta to form the TCR/CD3 complex on the surface of T-cells. Defects in this gene are a cause of severe combined immunodeficiency autosomal recessive T-cell-negative/B-cell-positive/NK-cell-positive (SCIDBNK). Two transcript variants encoding different isoforms have been found for this gene. Other variants may also exist, but the full-length nature of their transcripts has yet to be defined. [provided by RefSeq]

Other Designations

CD3D antigen, delta polypeptide|CD3d antigen, delta polypeptide (TiT3 complex)|T-cell receptor T3 delta chain|T-cell surface glycoprotein CD3 delta chain

Pathway

- [Hematopoietic cell lineage](#)
- [Primary immunodeficiency](#)

- [T cell receptor signaling pathway](#)

Disease

- [Celiac Disease](#)
- [Genetic Predisposition to Disease](#)