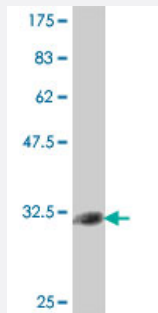


# CD3D polyclonal antibody (A01)

Catalog # H00000915-A01

Size 50 uL

## Applications



Western Blot detection against Immunogen (34.8 KDa) .

## Specification

<b>Product Description</b>	Mouse polyclonal antibody raised against a partial recombinant CD3D.
<b>Immunogen</b>	CD3D (NP_000723, 22 a.a. ~ 100 a.a) partial recombinant protein with GST tag.
<b>Sequence</b>	FKIPIEELEDRVFNCSITWVEGTGTLSDITRLDLGKRILDPRGYRCNGTDIYKDKESTVQVHY RMCQSCVELD
<b>Host</b>	Mouse
<b>Reactivity</b>	Human
<b>Quality Control Testing</b>	Antibody Reactive Against Recombinant Protein. Western Blot detection against Immunogen (34.8 KDa) .
<b>Storage Buffer</b>	50 % glycerol
<b>Storage Instruction</b>	Store at -20°C or lower. Aliquot to avoid repeated freezing and thawing.

## Applications

- Western Blot (Recombinant protein)

[Protocol Download](#)

- ELISA

## Gene Info — CD3D

Entrez GeneID [915](#)

GeneBank Accession# [NM\\_000732](#)

Protein Accession# [NP\\_000723](#)

Gene Name CD3D

Gene Alias CD3-DELTA, T3D

Gene Description CD3d molecule, delta (CD3-TCR complex)

Omim ID [186790 600802](#)

Gene Ontology [Hyperlink](#)

**Gene Summary**

The protein encoded by this gene is part of the T-cell receptor/CD3 complex (TCR/CD3 complex) and is involved in T-cell development and signal transduction. The encoded membrane protein represents the delta subunit of the CD3 complex, and along with four other CD3 subunits, binds either TCR alpha/beta or TCR gamma/delta to form the TCR/CD3 complex on the surface of T-cells. Defects in this gene are a cause of severe combined immunodeficiency autosomal recessive T-cell-negative/B-cell-positive/NK-cell-positive (SCIDBNK). Two transcript variants encoding different isoforms have been found for this gene. Other variants may also exist, but the full-length natures of their transcripts has yet to be defined. [provided by RefSeq]

**Other Designations**

CD3D antigen, delta polypeptide|CD3d antigen, delta polypeptide (TiT3 complex)|T-cell receptor T3 delta chain|T-cell surface glycoprotein CD3 delta chain

## Pathway

- [Hematopoietic cell lineage](#)
- [Primary immunodeficiency](#)
- [T cell receptor signaling pathway](#)

## Disease

- [Celiac Disease](#)
- [Genetic Predisposition to Disease](#)