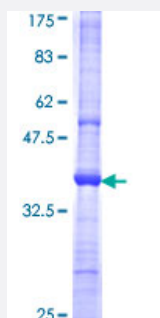


CD1C (Human) Recombinant Protein (Q01)

Catalog # H00000911-Q01

Size 25 ug, 10 ug

Applications



Specification

Product Description	Human CD1C partial ORF (NP_001756, 77 a.a. - 185 a.a.) recombinant protein with GST-tag at N-terminal.
Sequence	SNEELSDLELLFRFYLFGLTREIQDHASQDYSKYPFEVQVKAGCELHSGKSPEGFFQVAFNGLDL LSFQNTTWVSPGCGSLAQSVCHLLNHQYEGVTETVYNLIRSTC
Host	Wheat Germ (in vitro)
Theoretical MW (kDa)	37.73
Preparation Method	in vitro wheat germ expression system
Purification	Glutathione Sepharose 4 Fast Flow
Quality Control Testing	12.5% SDS-PAGE Stained with Coomassie Blue.
Storage Buffer	50 mM Tris-HCl, 10 mM reduced Glutathione, pH=8.0 in the elution buffer.
Storage Instruction	Store at -80°C. Aliquot to avoid repeated freezing and thawing.
Note	Best use within three months from the date of receipt of this protein.

Applications

- Enzyme-linked Immunoabsorbent Assay
- Western Blot (Recombinant protein)
- Antibody Production
- Protein Array

Gene Info — CD1C

Entrez GeneID [911](#)

GeneBank Accession# [NM_001765](#)

Protein Accession# [NP_001756](#)

Gene Name CD1C

Gene Alias BDCA1, CD1, CD1A, R7

Gene Description CD1c molecule

Omim ID [188340](#)

Gene Ontology [Hyperlink](#)

Gene Summary This gene encodes a member of the CD1 family of transmembrane glycoproteins, which are structurally related to the major histocompatibility complex (MHC) proteins and form heterodimers with beta-2-microglobulin. The CD1 proteins mediate the presentation of primarily lipid and glycolipid antigens of self or microbial origin to T cells. The human genome contains five CD1 family genes organized in a cluster on chromosome 1. The CD1 family members are thought to differ in their cellular localization and specificity for particular lipid ligands. The protein encoded by this gene is broadly distributed throughout the endocytic system via a tyrosine-based motif in the cytoplasmic tail. Alternatively spliced transcript variants of this gene have been observed, but their full-length nature is not known. [provided by RefSeq]

Other Designations CD1C antigen|CD1C antigen, c polypeptide|OTTHUMP00000018909|T-cell surface glycoprotein CD1c|cortical thymocyte antigen CD1C|differentiation antigen CD1-alpha-3

Pathway

- [Hematopoietic cell lineage](#)

Disease

- [Lung Diseases](#)
- [Mycobacterium Infections](#)