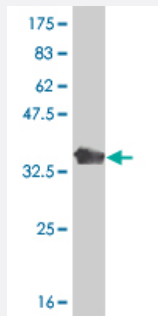


# CD1C polyclonal antibody (A01)

Catalog # H00000911-A01

Size 50 uL

## Applications



Western Blot detection against Immunogen (38.1 KDa) .

## Specification

<b>Product Description</b>	Mouse polyclonal antibody raised against a partial recombinant CD1C.
<b>Immunogen</b>	CD1C (NP_001756, 77 a.a. ~ 185 a.a) partial recombinant protein with GST tag.
<b>Sequence</b>	SNEELSDLELLFRFYLFGLTREIQDHASQDYSKYPFEVQVKAGCELHSGKSPEGFFQVAFNGLDL LSFQNTTWVPSPGCGSLAQSVCHLLNHQYEGVTETVYNLIRSTC
<b>Host</b>	Mouse
<b>Reactivity</b>	Human
<b>Quality Control Testing</b>	Antibody Reactive Against Recombinant Protein. Western Blot detection against Immunogen (38.1 KDa) .
<b>Storage Buffer</b>	50 % glycerol
<b>Storage Instruction</b>	Store at -20°C or lower. Aliquot to avoid repeated freezing and thawing.

## Applications

- Western Blot (Recombinant protein)

[Protocol Download](#)

- ELISA

## Gene Info — CD1C

Entrez GeneID	<a href="#">911</a>
GeneBank Accession#	<a href="#">NM_001765</a>
Protein Accession#	<a href="#">NP_001756</a>
Gene Name	CD1C
Gene Alias	BDCA1, CD1, CD1A, R7
Gene Description	CD1c molecule
Omim ID	<a href="#">188340</a>
Gene Ontology	<a href="#">Hyperlink</a>
Gene Summary	<p>This gene encodes a member of the CD1 family of transmembrane glycoproteins, which are structurally related to the major histocompatibility complex (MHC) proteins and form heterodimers with beta-2-microglobulin. The CD1 proteins mediate the presentation of primarily lipid and glycolipid antigens of self or microbial origin to T cells. The human genome contains five CD1 family genes organized in a cluster on chromosome 1. The CD1 family members are thought to differ in their cellular localization and specificity for particular lipid ligands. The protein encoded by this gene is broadly distributed throughout the endocytic system via a tyrosine-based motif in the cytoplasmic tail. Alternatively spliced transcript variants of this gene have been observed, but their full-length nature is not known. [provided by RefSeq]</p>
Other Designations	CD1C antigen CD1C antigen, c polypeptide OTTHUMP00000018909 T-cell surface glycoprotein CD1c cortical thymocyte antigen CD1C differentiation antigen CD1-alpha-3

## Pathway

- [Hematopoietic cell lineage](#)

## Disease

- [Lung Diseases](#)

- [Mycobacterium Infections](#)