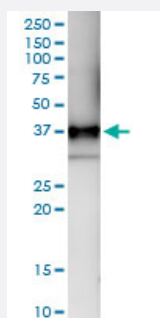


# CD1B (Human) IP-WB Antibody Pair

Catalog # H00000910-PW1

Size 1 Set

## Applications



Immunoprecipitation of CD1B transfected lysate using rabbit polyclonal anti-CD1B and Protein A Magnetic Bead ([U0007](#)), and immunoblotted with mouse polyclonal anti-CD1B.

## Specification

<b>Product Description</b>	This IP-WB antibody pair set comes with one antibody for immunoprecipitation and another to detect the precipitated protein in western blot.
<b>Reactivity</b>	Human
<b>Quality Control Testing</b>	Immunoprecipitation-Western Blot (IP-WB) Immunoprecipitation of CD1B transfected lysate using rabbit polyclonal anti-CD1B and Protein A Magnetic Bead ( <a href="#">U0007</a> ), and immunoblotted with mouse polyclonal anti-CD1B.
<b>Supplied Product</b>	Antibody pair set content: 1. Antibody pair for IP: rabbit polyclonal anti-CD1B (300 ul) 2. Antibody pair for WB: mouse polyclonal anti-CD1B (50 ul)
<b>Storage Instruction</b>	Store reagents of the antibody pair set at -20°C or lower. Please aliquot to avoid repeated freeze thaw cycle. Reagents should be returned to -20°C storage immediately after use.

## Applications

- Immunoprecipitation-Western Blot

[Protocol Download](#)

## Gene Info — CD1B

**Entrez GeneID** [910](#)

**Gene Name** CD1B

**Gene Alias** CD1, CD1A, MGC125990, MGC125991, R1

**Gene Description** CD1b molecule

**Omim ID** [188360](#)

**Gene Ontology** [Hyperlink](#)

**Gene Summary** This gene encodes a member of the CD1 family of transmembrane glycoproteins, which are structurally related to the major histocompatibility complex (MHC) proteins and form heterodimers with beta-2-microglobulin. The CD1 proteins mediate the presentation of primarily lipid and glycolipid antigens of self or microbial origin to T cells. The human genome contains five CD1 family genes organized in a cluster on chromosome 1. The CD1 family members are thought to differ in their cellular localization and specificity for particular lipid ligands. The protein encoded by this gene localizes to late endosomes and lysosomes via a tyrosine-based motif in the cytoplasmic tail, and requires vesicular acidification to bind lipid antigens. [provided by RefSeq]

**Other Designations** CD1B antigen|CD1B antigen, b polypeptide|OTTHUMP00000018908|T-cell surface glycoprotein CD1b|cortical thymocyte antigen CD1B|differentiation antigen CD1-alpha-3

## Pathway

- [Hematopoietic cell lineage](#)

## Disease

- [Lung Diseases](#)
- [Mycobacterium Infections](#)