

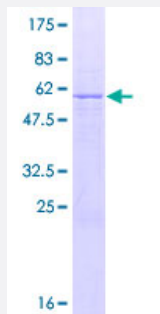
Full-Length

CD1B (Human) Recombinant Protein (P01)

Catalog # H00000910-P01

Size 25 ug, 10 ug

Applications



Specification

Product Description

Human CD1B full-length ORF (NP_001755.1, 1 a.a. - 333 a.a.) recombinant protein with GST-tag at N-terminal.

Sequence

MLLLPFQLLAVLFPGGNSEHAFQGPTSFHVIQTSSFTNSTWAQTQGGSGWLDDLQIHGWDSDSGT
AIFLKPWSKGNFSDKEVAELEEIFRVYIFGFAREVQDFAGDFQMKYPFEIQGIAGCELHSGGAIVSF
LRGALGGLDFLSVKNASCVPSPGEGSRAQKFCALIQYQGIMETVRILLYETCPRYLLGVLNAGKAD
LQRQVKPEAWLSSGSPSPGPGRLQLVCHVSGFYKPVVWVMWRGEQEQGTQLGDILPNANWT
WYLRATLDVADGEAAGLSCRVKHSSLEGQDILYWRNPTSIGSMVLAIVPSLLLLLCLALWYMRRRS
YQNIP

Host

Wheat Germ (in vitro)

Theoretical MW (kDa)

63.3

Preparation Method

[in vitro wheat germ expression system](#)

Purification

Glutathione Sepharose 4 Fast Flow

Quality Control Testing

12.5% SDS-PAGE Stained with Coomassie Blue.

Storage Buffer

50 mM Tris-HCl, 10 mM reduced Glutathione, pH=8.0 in the elution buffer.

Storage Instruction

Store at -80°C. Aliquot to avoid repeated freezing and thawing.

Note

Best use within three months from the date of receipt of this protein.

Applications

- Enzyme-linked Immunoabsorbent Assay
- Western Blot (Recombinant protein)
- Antibody Production
- Protein Array

Gene Info — CD1B

Entrez GeneID [910](#)

GeneBank Accession# [NM_001764.2](#)

Protein Accession# [NP_001755.1](#)

Gene Name CD1B

Gene Alias CD1, CD1A, MGC125990, MGC125991, R1

Gene Description CD1b molecule

Omim ID [188360](#)

Gene Ontology [Hyperlink](#)

Gene Summary This gene encodes a member of the CD1 family of transmembrane glycoproteins, which are structurally related to the major histocompatibility complex (MHC) proteins and form heterodimers with beta-2-microglobulin. The CD1 proteins mediate the presentation of primarily lipid and glycolipid antigens of self or microbial origin to T cells. The human genome contains five CD1 family genes organized in a cluster on chromosome 1. The CD1 family members are thought to differ in their cellular localization and specificity for particular lipid ligands. The protein encoded by this gene localizes to late endosomes and lysosomes via a tyrosine-based motif in the cytoplasmic tail, and requires vesicular acidification to bind lipid antigens. [provided by RefSeq]

Other Designations CD1B antigen|CD1B antigen, b polypeptide|OTTHUMP00000018908|T-cell surface glycoprotein CD1b|cortical thymocyte antigen CD1B|differentiation antigen CD1-alpha-3

Pathway

- [Hematopoietic cell lineage](#)

Disease

- [Lung Diseases](#)
- [Mycobacterium Infections](#)