

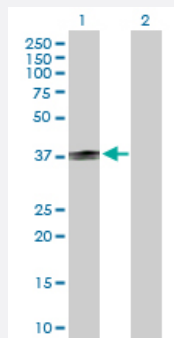
MaxPab®

CD1B purified MaxPab rabbit polyclonal antibody (D01P)

Catalog # H00000910-D01P

Size 100 ug

Applications



Western Blot (Transfected lysate)

Western Blot analysis of CD1B expression in transfected 293T cell line ([H00000910-T02](#)) by CD1B MaxPab polyclonal antibody.

Lane 1: CD1B transfected lysate(36.90 KDa).

Lane 2: Non-transfected lysate.

Specification

Product Description

Rabbit polyclonal antibody raised against a full-length human CD1B protein.

Immunogen

CD1B (NP_001755.1, 1 a.a. ~ 333 a.a) full-length human protein.

Sequence

MLLLPFQLLAVLFPGGNSEHAFQGPTSFHVIQTSSFTNSTWAQTQGSGWLDDLQIHGWSDSGT
AIFLKPWSKGNFSDKEVAELEEIFRVYIFGFAREVQDFAGDFQMKYPFEIQGIAGCELHSGGAINVSF
LRGALGGLDFLSVKNASCVPSPGGSRAQKFCALIQYQGIMETVRILLYETCPRYLLGVLNAGKAD
LQRQVKPEAWLSSGSPSPGPGRLLQLVCHVSGFYKPKVWVMWMRGEQEQQGTQLGDILPNANWT
WYLRATLDVADGEAAGLSCRVKHSSLEGQDILYWRNPTSIGSIVLAIIVPSLLLLLCLALWYMRRRS
YQNIP

Host

Rabbit

Reactivity

Human

Quality Control Testing

Antibody reactive against mammalian transfected lysate.

Storage Buffer

In 1x PBS, pH 7.4

Storage Instruction

Store at -20°C or lower. Aliquot to avoid repeated freezing and thawing.

Applications

- Western Blot (Transfected lysate)

Western Blot analysis of CD1B expression in transfected 293T cell line ([H00000910-T02](#)) by CD1B MaxPab polyclonal antibody.

Lane 1: CD1B transfected lysate(36.90 KDa).

Lane 2: Non-transfected lysate.

[Protocol Download](#)

Gene Info — CD1B

Entrez GeneID [910](#)

GeneBank Accession# [NM_001764](#)

Protein Accession# [NP_001755.1](#)

Gene Name CD1B

Gene Alias CD1, CD1A, MGC125990, MGC125991, R1

Gene Description CD1b molecule

Omim ID [188360](#)

Gene Ontology [Hyperlink](#)

Gene Summary This gene encodes a member of the CD1 family of transmembrane glycoproteins, which are structurally related to the major histocompatibility complex (MHC) proteins and form heterodimers with beta-2-microglobulin. The CD1 proteins mediate the presentation of primarily lipid and glycolipid antigens of self or microbial origin to T cells. The human genome contains five CD1 family genes organized in a cluster on chromosome 1. The CD1 family members are thought to differ in their cellular localization and specificity for particular lipid ligands. The protein encoded by this gene localizes to late endosomes and lysosomes via a tyrosine-based motif in the cytoplasmic tail, and requires vesicular acidification to bind lipid antigens. [provided by RefSeq]

Other Designations CD1B antigen|CD1B antigen, b polypeptide|OTTHUMP00000018908|T-cell surface glycoprotein CD1b|cortical thymocyte antigen CD1B|differentiation antigen CD1-alpha-3

Pathway

- [Hematopoietic cell lineage](#)

Disease

- [Lung Diseases](#)
- [Mycobacterium Infections](#)