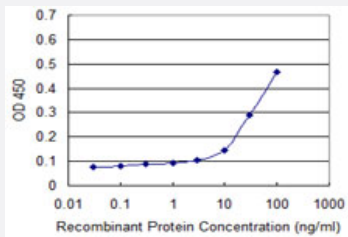


CCNG1 monoclonal antibody (M01), clone 1E3

Catalog # H00000900-M01

Size 100 ug

Applications



Sandwich ELISA (Recombinant protein)

Detection limit for recombinant GST tagged CCNG1 is approximately 10ng/ml as a capture antibody.

Specification

Product Description	Mouse monoclonal antibody raised against a partial recombinant CCNG1.
Immunogen	CCNG1 (AAH00196, 1 a.a. ~ 110 a.a) partial recombinant protein with GST tag. MW of the GST tag alone is 26 KDa.
Sequence	MIEVLTTTDSQKLLHQLNALLEQESRCQPKVCGLRLIESAHDNGLRMTARLRDFEVKDLLSLTQFF GFDTEFTSLAVNLLDRFLSKMKVQPKHLGCVGLSCFYLAVKSIE
Host	Mouse
Reactivity	Human
Isotype	IgG2a Kappa
Quality Control Testing	Antibody Reactive Against Recombinant Protein.
Storage Buffer	In 1x PBS, pH 7.4
Storage Instruction	Store at -20°C or lower. Aliquot to avoid repeated freezing and thawing.

Applications

- Sandwich ELISA (Recombinant protein)

Detection limit for recombinant GST tagged CCNG1 is approximately 10ng/ml as a capture antibody.

[Protocol Download](#)

- ELISA

Gene Info — CCNG1

Entrez GeneID	900
---------------	---------------------

GeneBank Accession#	BC000196
---------------------	--------------------------

Protein Accession#	AAH00196
--------------------	--------------------------

Gene Name	CCNG1
-----------	-------

Gene Alias	CCNG
------------	------

Gene Description	cyclin G1
------------------	-----------

Omim ID	601578
---------	------------------------

Gene Ontology	Hyperlink
---------------	---------------------------

Gene Summary	The eukaryotic cell cycle is governed by cyclin-dependent protein kinases (CDKs) whose activities are regulated by cyclins and CDK inhibitors. The protein encoded by this gene is a member of the cyclin family and contains the cyclin box. The encoded protein lacks the protein destabilizing (PEST) sequence that is present in other family members. Transcriptional activation of this gene can be induced by tumor protein p53. Two transcript variants encoding the same protein have been identified for this gene. [provided by RefSeq]
--------------	--

Other Designations	-
--------------------	---

Pathway

- [p53 signaling pathway](#)

Disease

- [Genetic Predisposition to Disease](#)
- [Ovarian Neoplasms](#)