

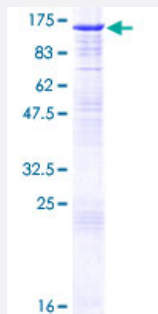
Full-Length

# CCNF (Human) Recombinant Protein (P01)

Catalog # H00000899-P01

Size 25 ug, 10 ug

## Applications



## Specification

### Product Description

Human CCNF full-length ORF ( NP\_001752.2, 1 a.a. - 786 a.a.) recombinant protein with GST-tag at N-terminal.

### Sequence

MSGGGVHCRCAKCFYCPTKRRI RRRPRNL TILSLPEDVLFHILKWLSVEDILAVRAVHSQLKDLV  
DNHASVWACASFQELWPSPGNLKLFERAAEKGNFEAAVKLGIAIYLYNEGLSVSDEARAEVNLK  
ASRFFSLAERLNVGAAPFWLFI RPPWSVSGSCCKAVVHESLRAECQLQRTHKASILHCLGRVLS  
LFEDEEKQQQAHDLFEEAAHQGCLTSSYLLWESDRRTDVSDPGRCLHSFRKLRDYAAKGCWEA  
QLSLAKACANANQLGLEVRASSEIVCQLFQASQAVSKQQVFSVQKGLNDTMYILIDWLVEVATM  
KDFTSLCLHLTVECVDRLRRRLVPRYRLQLLGIACMVICTRFISKEILTIREAVWLT DNTYKYEDLVR  
MMGEIVSALEGKIRVPTVVDYKEVLLTLVPVELRTQHLC SFLCELSLLHTSL SAYAPARLAAAALLL  
ARLTHGQTQPWTTQLWDLTGFSYEDLIPC VLSLHKKCFHDDAPKDYRQVSLTAVKQRFEDKRYG  
EISQEEVLSYSQLCAALGVTQDSPDPPTFLSTGEIHAFLSSPSGRRTKRKRENSLQEDRGSFVTT  
PTAELSSQEETLLGSFLDWSLDCCSGYEGDQESEGEKEGDVTAPSGILDVTVVYLNPEQHCCQE  
SSDEEACPEDKGPQDPQALALDTQIPATPGPKPLVRTSREP GKDVTTSGYSSVSTASPTSSVDG  
GLGALPQPTS VLSLSDSHTQPCHHQARKSCLQCRPPSPPESSVPQQQVKRINLCIHSEEDMN  
LGLVRL

### Host

Wheat Germ (in vitro)

### Theoretical MW (kDa)

114

### Interspecies Antigen Sequence

Mouse (84); Rat (85)

Preparation Method	<a href="#">in vitro wheat germ expression system</a>
Purification	Glutathione Sepharose 4 Fast Flow
Quality Control Testing	12.5% SDS-PAGE Stained with Coomassie Blue.
Storage Buffer	50 mM Tris-HCl, 10 mM reduced Glutathione, pH=8.0 in the elution buffer.
Storage Instruction	Store at -80°C. Aliquot to avoid repeated freezing and thawing.
Note	Best use within three months from the date of receipt of this protein.

## Applications

- Enzyme-linked Immunoabsorbent Assay
- Western Blot (Recombinant protein)
- Antibody Production
- Protein Array

## Gene Info — CCNF

Entrez GeneID	<a href="#">899</a>
GeneBank Accession#	<a href="#">NM_001761.2</a>
Protein Accession#	<a href="#">NP_001752.2</a>
Gene Name	CCNF
Gene Alias	FBX1, FBXO1
Gene Description	cyclin F
Omim ID	<a href="#">600227</a>
Gene Ontology	<a href="#">Hyperlink</a>

**Gene Summary**

This gene encodes a member of the cyclin family. Cyclins are important regulators of cell cycle transitions through their ability to bind and activate cyclin-dependent protein kinases. This member also belongs to the F-box protein family which is characterized by an approximately 40 amino acid motif, the F-box. The F-box proteins constitute one of the four subunits of the ubiquitin protein ligase complex called SCFs (SKP1-cullin-F-box), which function in phosphorylation-dependent ubiquitination. The F-box proteins are divided into 3 classes: Fbws containing WD-40 domains, Fbls containing leucine-rich repeats, and Fbxs containing either different protein-protein interaction modules or no recognizable motifs. The protein encoded by this gene belongs to the Fbxs class and it was one of the first proteins in which the F-box motif was identified. [provided by RefSeq]

**Other Designations**

F-box only protein 1