

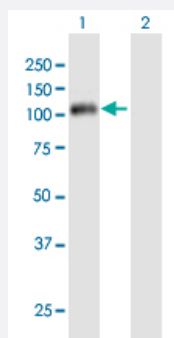
MaxPab®

CCNF purified MaxPab mouse polyclonal antibody (B01P)

Catalog # H00000899-B01P

Size 50 ug

Applications



Western Blot (Transfected lysate)

Western Blot analysis of CCNF expression in transfected 293T cell line ([H00000899-T01](#)) by CCNF MaxPab polyclonal antibody.

Lane 1: CCNF transfected lysate (86.46 kDa).

Lane 2: Non-transfected lysate.

Specification

Product Description

Mouse polyclonal antibody raised against a full-length human CCNF protein.

Immunogen

CCNF (AAH12349, 1 a.a. ~ 786 a.a) full-length human protein.

Sequence

MGSGGVVHCRCAKCFYCPTKRRIRRRPRNLTILSLPEDVLFHILKWLSVEDILAVRAVHSQLKDLV
DNHASVWACASFQELWPSPGNLKLFERAAEKGNFEAAVKLGIALYNEGLSVSDEARAEVNGLK
ASRFFSLAERLNVGAAPFWLFRPPWSVSGSCCKAVVHESLRAECQLQRTHKASILHCLGRVLS
LFEDDEEKQQQAHDLFEEAAHQGCLTSSYLLWESDRRTDVSDPGRCLHSFRKLRDYAAKGCWEA
QLSLAKACANANQLGLEVRASSEIVCQLFQASQAVSKQQVFVQKGLNDTMRYLIDWLVEVATM
KDFTSLCLHLTVCEVDRLRRRLVPRYRLQLLGIACMVICTRFISKEILTIREAVWLTNTYKYEDLVR
MMGEIVSALEGKIRVPTVVVDYKEVLLTLVPVELRTQHLCFSLCELSSLHTSL SAYAPARLAAAAALL
ARLTHGQTQPWTTQLWDLTGFSYEDLIPCVLSLHKKCFHDDAPKDYRQVSLTAVKQRFEDKRYG
EISQEEVLSYSQCAALGVTQDSDPPTFLSTGEIHAFLLSSPSGRRTKRKRENSLQEDRGSFVTT
PTAELSSQEETLLGSFLDWSLDCCSGYEGDQESEGEKEGDVTAPSGILDVTVVYLNPEQHCCQE
SSDEEACPEDKGPQDPQALALDTQIPATPGPKPLVRTSREPGKDVTTSGYSSVSTASPTSSVDG
GLGALPQPTSVLSLSDSHTQPCHHQARKSCLQCRPPSPPESSVPQQQVKRINLCIHSEEDMN
LGLVRL

Host

Mouse

Reactivity

Human

Interspecies Antigen Sequence	Mouse (84); Rat (85)
Quality Control Testing	Antibody reactive against mammalian transfected lysate.
Storage Buffer	In 1x PBS, pH 7.4
Storage Instruction	Store at -20°C or lower. Aliquot to avoid repeated freezing and thawing.

Applications

- Western Blot (Transfected lysate)

Western Blot analysis of CCNF expression in transfected 293T cell line ([H00000899-T01](#)) by CCNF MaxPab polyclonal antibody.

Lane 1: CCNF transfected lysate(86.46 KDa).

Lane 2: Non-transfected lysate.

[Protocol Download](#)

Gene Info — CCNF

Entrez GeneID [899](#)

GeneBank Accession# [BC012349](#)

Protein Accession# [AAH12349](#)

Gene Name CCNF

Gene Alias FBX1, FBXO1

Gene Description cyclin F

Omim ID [600227](#)

Gene Ontology [Hyperlink](#)

Gene Summary

This gene encodes a member of the cyclin family. Cyclins are important regulators of cell cycle transitions through their ability to bind and activate cyclin-dependent protein kinases. This member also belongs to the F-box protein family which is characterized by an approximately 40 amino acid motif, the F-box. The F-box proteins constitute one of the four subunits of the ubiquitin protein ligase complex called SCFs (SKP1-cullin-F-box), which function in phosphorylation-dependent ubiquitination. The F-box proteins are divided into 3 classes: Fbws containing WD-40 domains, Fbls containing leucine-rich repeats, and Fbxs containing either different protein-protein interaction modules or no recognizable motifs. The protein encoded by this gene belongs to the Fbxs class and it was one of the first proteins in which the F-box motif was identified. [provided by RefSeq]

Other DesignationsF-box only protein 1
