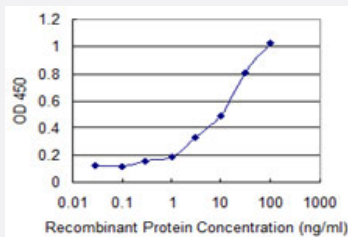


KRIT1 monoclonal antibody (M02), clone 1D8

Catalog # H00000889-M02

Size 100 ug

Applications



Sandwich ELISA (Recombinant protein)

Detection limit for recombinant GST tagged KRIT1 is 0.1 ng/ml as a capture antibody.

Specification

Product Description	Mouse monoclonal antibody raised against a partial recombinant KRIT1.
Immunogen	KRIT1 (NP_004903, 637 a.a. ~ 736 a.a) partial recombinant protein with GST tag. MW of the GST tag alone is 26 KDa.
Sequence	AAFFTGGQIFTKASPSNHKVIPVYGVNIGLHLLNMETKALLISLKYGCFMWQLGDTDTCTCFQIHSME NKMSFVHTKQAGLVVKLLMKLNGQLMPTERN
Host	Mouse
Reactivity	Human
Interspecies Antigen Sequence	Mouse (95); Rat (95)
Isotype	IgG1 Kappa
Quality Control Testing	Antibody Reactive Against Recombinant Protein.
Storage Buffer	In 1x PBS, pH 7.4
Storage Instruction	Store at -20°C or lower. Aliquot to avoid repeated freezing and thawing.

Applications

- Sandwich ELISA (Recombinant protein)

Detection limit for recombinant GST tagged KRIT1 is 0.1 ng/ml as a capture antibody.

[Protocol Download](#)

- ELISA

Gene Info — KRIT1

Entrez GeneID [889](#)

GeneBank Accession# [NM_004912](#)

Protein Accession# [NP_004903](#)

Gene Name KRIT1

Gene Alias CAM, CCM1

Gene Description KRIT1, ankyrin repeat containing

Omim ID [116860 604214](#)

Gene Ontology [Hyperlink](#)

Gene Summary This gene encodes a protein containing four ankyrin repeats, a band 4.1/ezrin/radixin/moesin (FERM) domain, and multiple NPXY sequences. The encoded protein is localized in the nucleus and cytoplasm. It binds to integrin cytoplasmic domain-associated protein-1 alpha (ICAP1alpha), and plays a critical role in beta1-integrin-mediated cell proliferation. It associates with junction proteins and RAS-related protein 1A (Rap1A), which requires the encoded protein for maintaining the integrity of endothelial junctions. It is also a microtubule-associated protein and may play a role in microtubule targeting. Mutations in this gene result in cerebral cavernous malformations. Multiple alternatively spliced transcript variants have been found for this gene. [provided by RefSeq]

Other Designations ankyrin repeat-containing protein Krit1|cerebral cavernous malformations 1|krev interaction trapped 1

Disease

- [Hemangioma](#)
- [Tobacco Use Disorder](#)